



# 皮带输送设备 产品与解决方案

## BELT CONVEYER PRODUCT AND SOLUTION

THE PROCESS OF CIVILIZATION, THE PROCESS OF DIVIDING. 文明的进程 细化的过程



**上海西芝矿山工程机械有限公司**  
Shanghai Zenith Mining and Construction Machinery Co., Ltd.

中国上海浦东金桥南区建业路416号  
No.416 Jianye Road, South Jinqiao Area,  
Pudong New District, Shanghai, China  
邮编 / Postcode: 201201

国际市场部 / International Trade Department  
Tel: 0086-58386256 58386258  
<http://www.zenithcrusher.com/>  
E-mail: [info@zenithcrusher.com](mailto:info@zenithcrusher.com)

**上海西芝矿山工程机械有限公司**  
Shanghai Zenith Mining and Construction Machinery Co., Ltd.



**What we do today is to  
ensure the future of our group  
with youth and spirit  
for ever and ever.....**

**我们现在所做的一切，  
是为了我们的企业一百年后还活着，  
朝气蓬勃  
依然年轻**

.....





## 上海西芝

矿山工程机械有限公司是一家集先进科技与研发于一体的公司。

上海西芝是专业从事物料运输设备生产及整套解决方案的大型企业，同时在矿山破碎设备，磨选设备的制造和整套解决方案上有着丰富的经验。

我们的产品已远销东南亚、东欧、南美、中东以及非洲等160多个国家和地区，在未来的发展中，我们将开拓更广阔的海外市场。

Shanghai Zenith Mining and Construction Machinery Co., Ltd. is a hi-tech, engineering group.

Shanghai ZENITH, Professional manufacturer of material conveyer equipment and complete set of solutions also with abundant experiences in Mining&Minerals Equipments.

Our products have been sold to 160 countries and areas of Southeast Asia, East Europe, South America, the Middle East and Africa etc, and more foreign markets will be promoted in future.



## COMPANY PROFILE 公司基本介绍

我们始终以“追求西芝模式的高科技与高质量”为企业管理的坚实理念。通过不断地引进世界领先水平的破碎磨粉技术、先进的管理经营理念和良好的质量控制体系，以及我们的创新与努力，使得我们的企业在广大客户群中建立了良好的口碑。

We hold "Pursuing the Zenith Technology and Quality" as our management concept all the time. Relying on absorbing world leading crushing and powder processing technology, advanced management and quality control system, as well as our full efforts, ZENITH has earned high reputation among our customers.



# H THE ROAD OF HISTORY

## 上海西芝 历史之路

### 80年代—2000年

#### 公司技术装备展示及重要事件

Presentation and major events for all company's equipment and technology

80 年代

80年代起生产小型风选式粉碎设备。  
It started to produce small air separation grinding equipment in the 1980s.

1990年

1990年引进传统雷蒙磨技术，并应用投产。  
In 1990, it introduced the traditional Raymond mill technology and applied the technology into the products

1994年

1994年自主研发高压悬辊磨，并应用投产。  
In 1994, it developed a high-pressure mill independently and applied the technology into the products

1996年

1996年上海市浦东金桥南区川沙生产基地建成并投入使用  
In 1996, Chuansha Production Base was built and put into use in South Jinqiao Area, Pudong New Area, Shanghai

1996年研发出加细高压磨粉机。  
In 1996, it researched and developed a high-pressure fine mill.

1998年

1998年上海市南汇区祝桥生产基地一期建成并投入使用  
In 1998, Zhuqiao Production Base was built and put into use in Nanhui District, Shanghai.

1998年新产品直通式离心磨研发完成。  
In 1998, it researched and developed a new product - centrifugal mill

2000年

2000年新产品上摆式磨粉机研发成功。  
In 2000, it succeeded in research and development of a new product - overhanging pendulum mill

### 2003年—2014年

#### 公司技术装备展示及重要事件

Presentation and major events for all company's equipment and technology

2003年

2003年新产品超压梯形磨研发成功并取代了传统雷蒙磨。  
In 2003, it succeeded in research and development of a new product (overpressure trapezium mill) to replace the traditional Raymond mills.

2005年

2005年上海市浦东新区办公总部动工兴建；创新设计的专利产品欧版磨梯形磨研发成功，进入市场；大型立磨研发上线。  
In 2005, it started to construct its headquarters in Shanghai Pudong New Area; it succeeded in research and development of its innovative-designed patented product - Euro-type trapezium mill and put it into the market; its research and development was started for large vertical roller mills.

2006年

2006年超细微粉设备三环中速磨投产。  
In 2006, its ultrafine micro-powder equipment (three-ring medium-speed mills) was put into production.

2007年

2007 年海外拓展战略正式实施，相继成立迪拜、印度、美国、沙特等分公司  
In 2007, it officially started to implement its overseas development strategy, with branches set up successively in Dubai, India, the United States and Saudi Arabia.

2009年

2009年滨海工业园生产基地签约；  
In 2009, a contract was signed for the production base in Binhai Industrial Park

2010年

2010年加强超细磨研发成功并投产；公司"新总部项目"用地使用权出让签约；  
In 2010, it succeeded in research and development of its reinforced ultrafine mill and put it into production; a contract was signed for land use right granting of the company's "New Headquarters Project"

2012年

2012年国内最大规格的欧版梯形磨粉机上线，并同年亮相Bauma China 2012  
In 2012, the domestically largest Euro-type trapezium mill was put into production and debuted at Bauma China 2012

2013年

2013年专业领域产品超细立磨研发并投产；公司参加2013德国慕尼黑宝马展  
In 2013, it succeeded in research and development of its professional product (ultrafine vertical roller mill) and put into production; the company participated in Bauma Munich 2013 in Germany

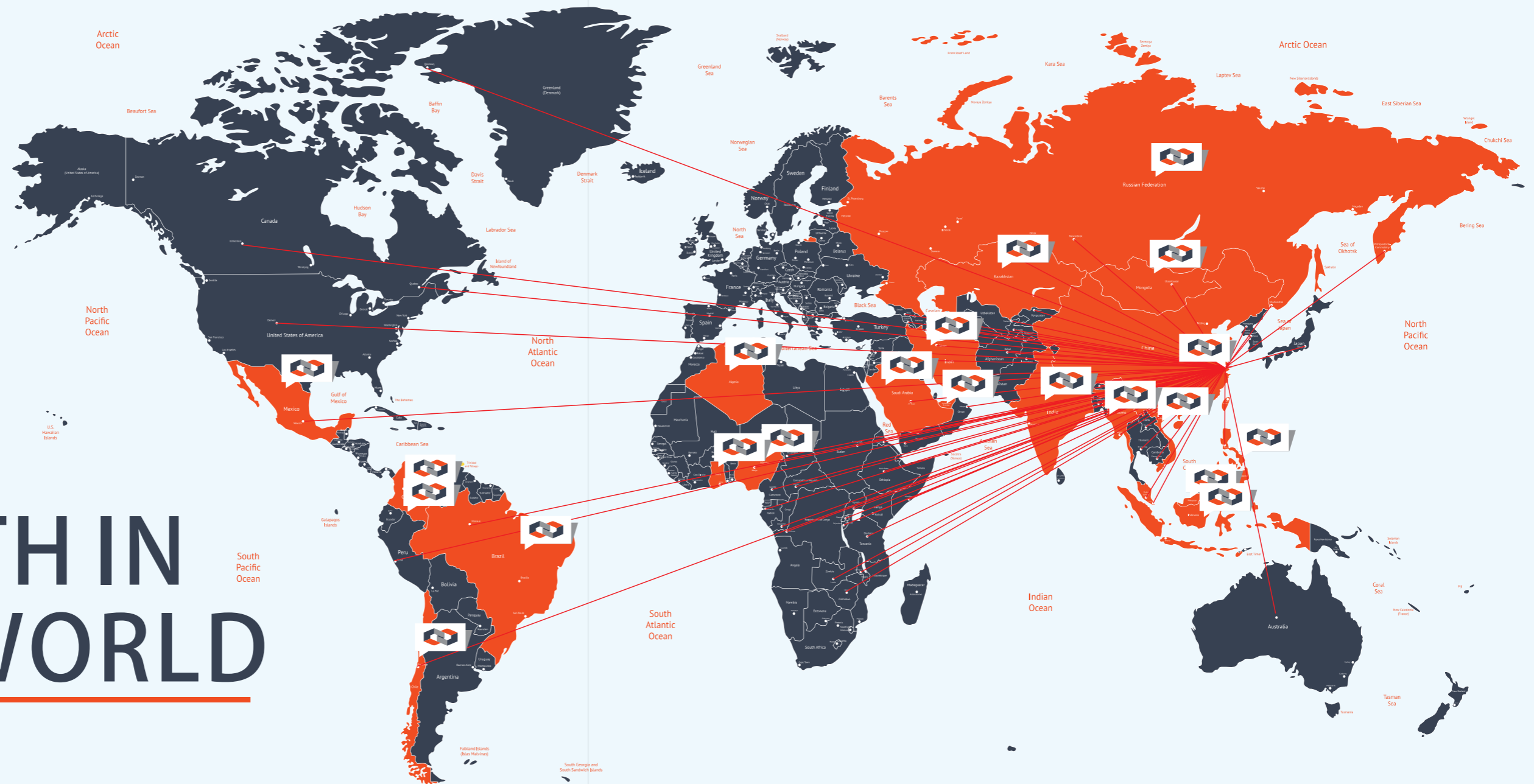
2014年

2014年公司新产品强势亮相Bauma China 2014。  
In 2014, the company's new product aggressively debuted at Bauma China 2014



# ZENITH IN THE WORLD

西芝在全球



# Product Summary

## 产品目录

**P09** 托辊  
Roller

**P11** 滚筒  
Pulley

**P12** 清扫器  
Belt cleaner

**P13** 落料缓冲床  
Buffer

**P14** 卸料器 结构件  
Unloaders Structural parts

**P15** 长距离皮带机  
Belt Conveyor

**P17** 大倾角带式输送机  
Large angle belt conveyor

**P18** 波状挡边带式输送机  
Belt conveyor of corrugated sidewall

**P19** DX型钢绳芯带式输送机  
DX steel cord belt conveyor

**P20** DTII(A)型固定式带式输送机  
DTII (A) fixed belt conveyor

**P21** DTII型固定式带式输送机  
DTII type fixed belt conveyor

**P22** TD75型固定式带式输送机  
TD75 series belt conveyor

**P23** 圆管状带式输送机  
Pipe belt conveyor

**P24** DTL型固定煤矿用带式输送机  
DTL series fixed coal ribbon conveyor

**P25** 移动式带式输送机  
Shifting belt conveyor

**P31** 案例  
Project Case

**P33** 生产基地  
production bases

**P35** 企业形象  
Enterprise Image

**P36** 客户服务  
Customer Services

# 皮带输送机配件 | BELT CONVERYOR PARTS

## 托辊 ROLLER

托辊组是带式输送机的重要组成部分，大约占总机价值的25%，托辊质量的好坏直接影响带式输送机的正常运转。  
我公司生产的托辊，产品结构合理，使用寿命长，可在-40℃-70℃，有粉尘、淋水的恶劣环境下正常工作。

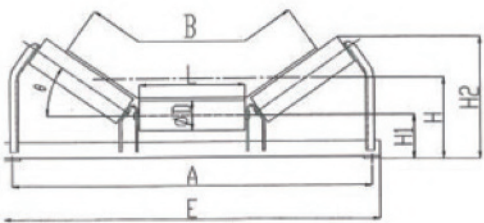
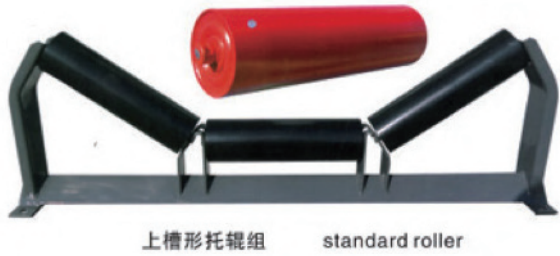
Rollers are important part of belt conveyyor,andcomprise up to a quarter of the cost of a conveyor.As sush,the quality of the rollers will directly impact the conveyor's economic performance.  
ZENITH rollers are designed with reasonable structure to guarantee the performing life.they can keep working under a temperature of -40 C-70 C and abad environment of dust and rain.

### STRUCTURE FEATURES

### 结构特点

托辊专用高频焊管、冲压轴承座、冷拔圆轴钢，使托辊重量轻、阻力小。采用大游隙滚动轴承和锂基润滑脂，双道密封，防尘防水性能好，使用寿命长，能符合高速运行的要求。托辊主要型号为Φ89MM、Φ 108MM、Φ 133MM、Φ 159MM四种。

The structural features of carrier roller special ratio-frequency welded tube、punched bearing box、cold-drawing round shaft steel makes the carrier roller lighter and less resistance. Double seal using big backlash rolling bearing and lithium base grease with good dust and waterproof performance, and long life service can meet the request of high speed operation. The main types of carrier roller are Φ89mm、Φ 108mm、Φ 133mm and Φ 159mm.



### 按材料分类

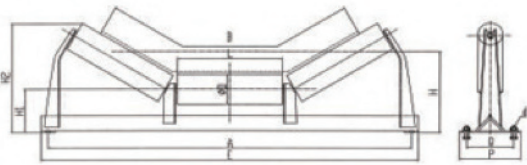
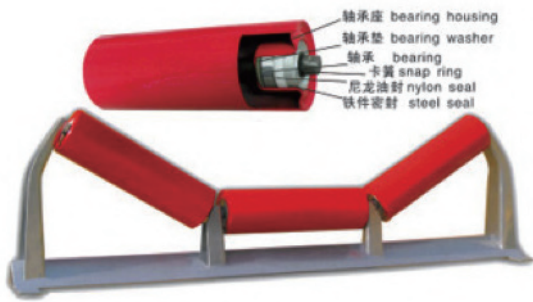
### ACCORDING TO THE MATERIAL

- 普通钢管托辊  
Standard Roller
- 不锈钢防磁托辊  
Stainless Steel Roller
- 陶瓷涂层托辊  
Ceramic Coating Roller
- 超高分子量聚乙烯托辊  
Polyethylene Roller
- 缓冲胶圈托辊  
Impact Roller
- 聚氨酯托辊  
Polyurethane Roller
- 橡胶托辊  
Rubber Roller
- 高耐磨陶瓷托辊  
High Wear-resistant Ceramic Roller
- 轻质铝合金托辊  
Lightweight Aluminum Roller
- 防腐尼龙托辊  
Antiseptic Nylon Roller

### 按使用功能分类

### ACCORDING TO THE FUNCTION

- 普通槽形托辊组  
Standard trough Idler
- 普通平行托辊组  
Standard flat Idler
- 各种调心托辊组  
Various training Idler
- 各种缓冲托辊组  
Various ImpactIdler
- 前倾槽形托辊组  
Offset Though Idler
- 各种V型托辊组  
Various VIdler
- 螺旋清扫托辊  
Spiral Cleaning Roller
- 梳形清扫托辊  
Comb Cleaning Roller



我公司所生产的托辊防尘型，防水性均优于国家标准，径跳小（≤0.3mm）旋转阻力小（≤0.002），寿命长（3万小时损坏率≤8%）。

ZENITH rollers are dustproof and waterproof and all ttolerances exceed national standards. They have lower TIR(≤0.002),and longer

# 滚筒 PULLEY



## FEATURES 特点

滚筒是皮带机输送机的重要部件之一，我公司生产的滚筒有以下主要特点：  
Pulley is an essential component of any belt conveyyor .zenith pulleys have the following features.

消失模整体铸造接盘，受力均衡，强度高。

Cast end discs feature less welding. Increased balance and increased tensile strength.

无键连接（传动滚筒用涨套，改向滚筒用过盈装配），使轴的失效机率大大降低。

Taper lock connections for drive pullers and interference assemblies for non-drive pulleys to reduce likelihood of damage caused by shaft rotation.

筒皮用钢板卷制，材质好，径跳有保障。

High quality shell material and guaranteed low TIR

逐个的静平衡实验，确保运行平稳

Static balancing

转悠硫化胶层提高滚筒的摩擦力和耐磨性，有效增加滚筒寿命。

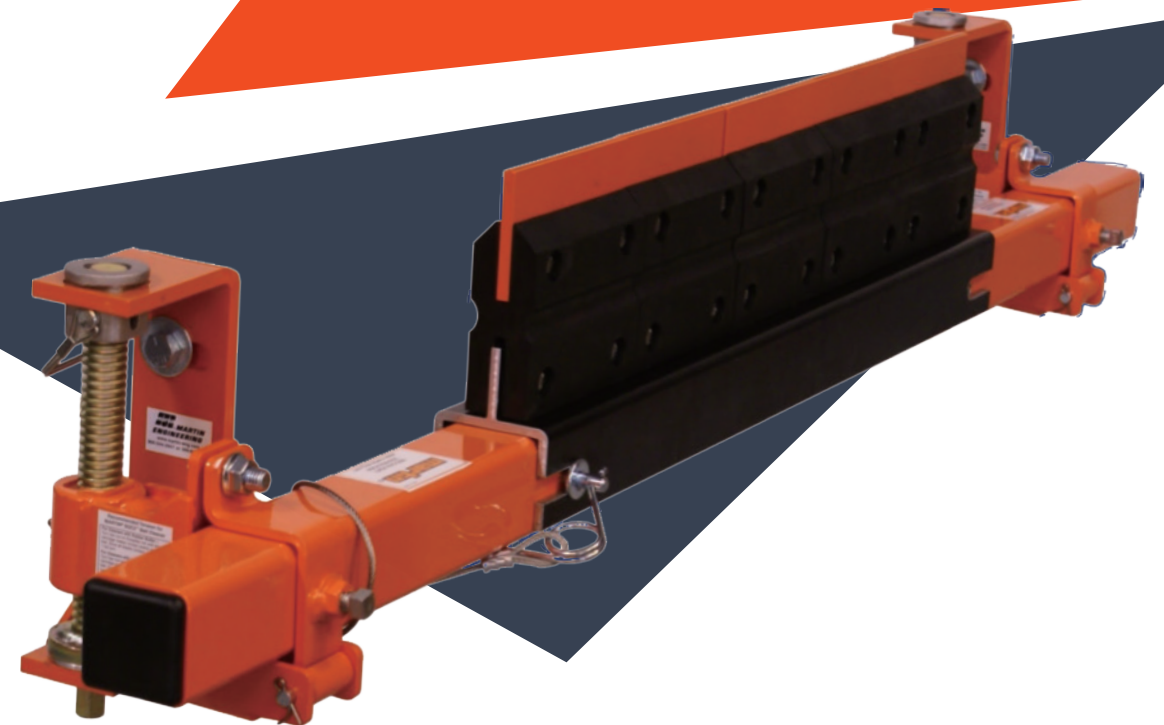
HOT vulcanized lagging(rubber or and rubber/ceramic) toextend pulley and belt life.

采用先进的有限元分析法优化设计，使高强度滚筒性能可靠，质量有保证

Designs using advanced finite element analysis methods to guarantee the performance and quality.



# 清扫器 BELT CLEANER



## FEATURES 特点

清扫器是带式输送机的保护装置，选择合适的清扫器可以有效的提高带式输送机胶带、托辊、滚筒的寿命。  
Belt cleaners are essential for protection of the convetor.A proper belt cleaner can extend the life of the belt,pulleys and roller.

## SORT OF BELT CLEANER 清扫器分类

硬质合金（陶瓷）弹性清扫器  
Cemented carbide(ceramic)belt cleaner

各种材质刮刀的空段清扫器  
Scrapers constructed with a variety of materials

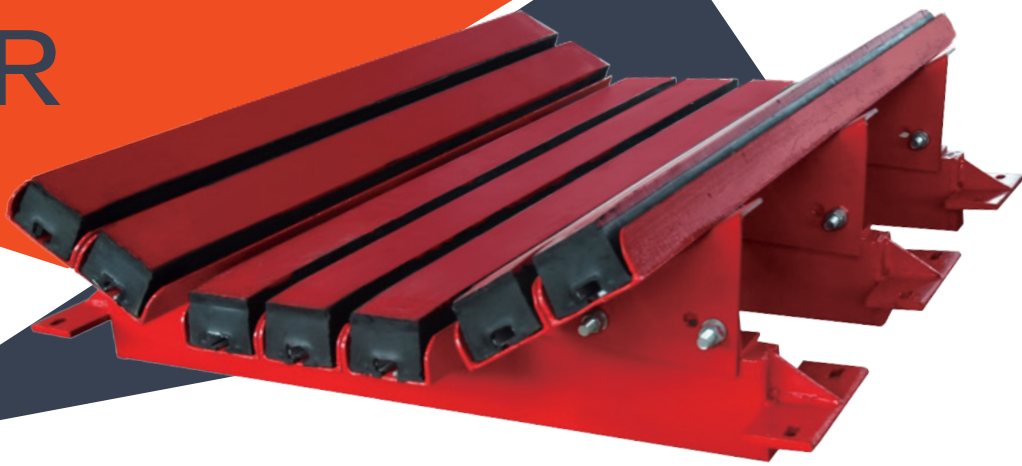
聚氨酯弹性清扫器  
Polymer belt cleaner

滚筒清扫器  
Dedicated belt cleaner for pulley

滚刷动力式主动清扫器  
Rolling brush active belt cleaner

喷水、滚刷、刮刀组合式重污染清扫装置  
Combined belt cleaner with water-spray,rolling brush and scraper for heavy duty applications.

# 落料缓冲床 BUFFER



## INTRODUCE 简介

落料缓冲床是在皮带机导料槽下方，落料点皮带的下面，采用摩擦系数小的超高分子工程塑料制成。并通过高弹性的橡胶缓冲体固定在钢支架上，依靠对输送带的有效支撑及吸收物料对输送带的冲击，降低输送带的磨损，延长输送带的寿命。

Buffer is used under the belt at material loading point. They are made of UHMWPE engineered plastic of low friction coefficient. The rubber impact blocks are fixed to the steel support to decrease the crush affect of the falling material by effectively supporting the belt .also the damage of the belt is decreased to extend life.



## ADVANTAGE 优势

摩擦系数小，耐磨体采用摩擦系数小的高分子工程塑料制成  
Low friction coefficient UHMWPE engineered plastic impact block.

通过对胶带的有效支撑及吸收物料对胶带的冲击，有效防止胶带撕裂  
Avoid belt damage by supporting it effectively.

有效消除因输送带非均匀受力而因袭的物料飞溅散漏  
Avoid splash back of the material

无运转部件，无需润滑，维修时只需更换耐磨体，免维护，降低成本  
Only need to change the impact block reducing maintenance costs.

模块化设计，拆分式结构，便于安装维修  
Designed as a whole mould which is more convenient to assemble and maintain.

托辊化设计，改造简便，将停工时间缩短到最低，有效提高生产效率  
Easy to transform and make a better work efficiency

根据需要，可定制为各种超高分子耐磨体  
We can provide various impact beds according to your requirements.

## SORT 种类

电动单双侧犁式卸料器  
moto-drive single(double)side plough discharge

手动单双侧犁式卸料器  
manually-opetated single(double)side plough discharge

轻型卸料车  
light-duty unloader

重型卸料车  
heavy-duty unloader

定点卸料装置  
fixed discharge device

重型转载卸料车  
heavy-duty transshiomment discharge

# 卸料器 NLOADERS

## INTRODUCE 简介

卸料器是带式输送机非头尾卸料的重要装置。

Unloaders are essential devices for unloading material at discharge points other than the the head of the conveyor.



# 结构件 STRUCTURAL PARTS

## INTRODUCE 简介

结构件的除锈在钢材预处理线上进行，该工序的特点是：喷丸、涂漆、干燥一次完成，油漆吸附性好，防腐能力强，生产效率高，提供钢材表面机械性能。

The descale is proceeded in the steel pretreatment line ,the specialty of the process is dry after shot blasting and paint instantly,so the paint is with good adsorbability and antiseptic to raise the mechanical property of the steel



皮带机产品

BELT  
CONVEYOR



长距离皮带机

LONG DISTANCE  
BELT CONVEYOR

INTRODUCE

简介

长距离皮带机主要用于倾角不大于18°长距离物料输送，可作水平运输、倾斜向上运输和倾斜向下运输。由于输送量大、结构简单、维修方便、成本低、通用性强等优点，而被广泛用于矿山、煤炭、交通、水电、化工等行业。

Long distance belt conveyor is mainly used for Long distance conveying whose dip angle is less than 18°,it can be used for horizontal transportation, tilted upward and downward sloping transport. It is widely used in mining, coal industry, transportation, water and electricity, chemical industry due to its advantage of large throughput, simple structure, convenient maintenance, low cost and high universality.



TECHNICAL SUPERIORITY

技术优势

液压自动张紧装置

hydraulic automatic takeup

采用液压自动张紧装置，既满足胶带启动与正常运行时对不同拉力的要求，运行可靠稳定，又可在不停机的状态下进行维护，降低维护成本。

we use hydraulic automatic takeup to meet the request of the different stretching force in lunch and normal operation, besides, it can be maintained during operation to reduce the maintenance cost.

智能化系统

intellectualized system

运用智能控制系统与变频器、ZYJ液压张紧装置构成了机电液一体化系统，实现带式输送机优异的启动、制动和功率平衡。

The use of integration system made up by intellectualized system, ZYJ hydraulic takeup and frequency converter make sure of the excellent starting, braking and power balance.

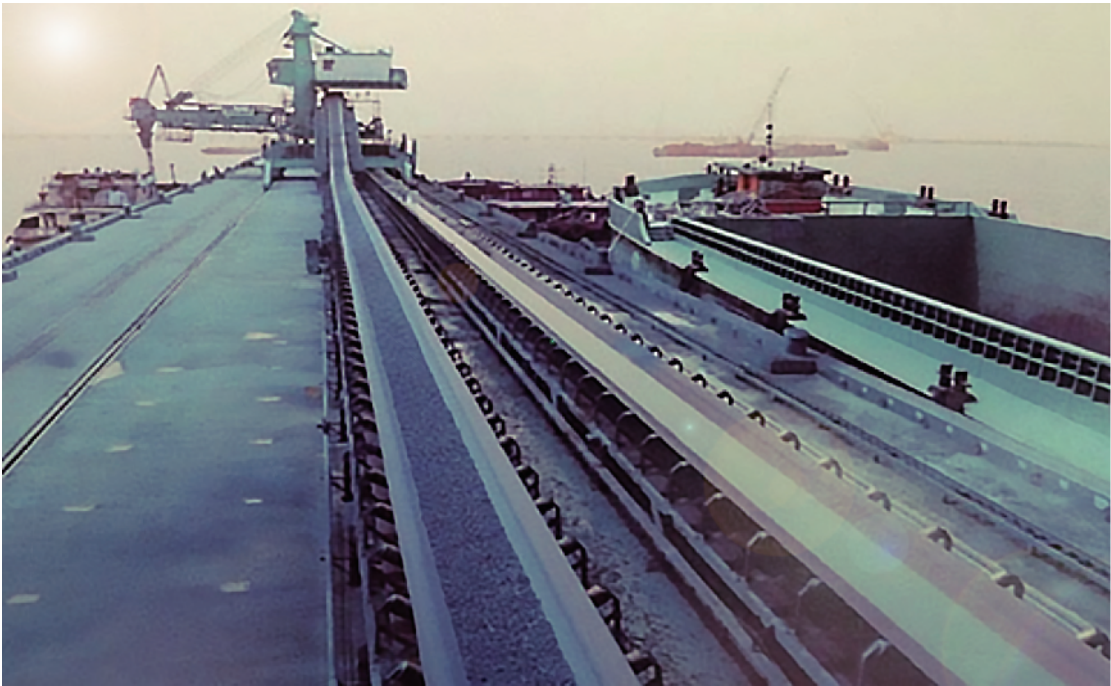
SPECIFICATION

技术参数

型号 Model	带宽 Width (mm)	倾角 Dip angle (°)	带速 Speed (m/s)	输送量 Conveying capacity (t/h)
B650	650	-15° ~18°	0.8~2.5	150~390
B800	800	-15° ~18°	1.0~2.5	300~600
B1000	1000	-15° ~18°	1.6~3.15	500~1200
B1200	1200	-15° ~18°	1.6~3.15	900~1800
B1400	1400	-15° ~18°	2.0~4.0	1500~3200

- 注：
- 表中输送量按水平运输，动堆积角  $\theta$  为20°、托辊槽角  $\lambda$  为35° 计算得到，具体情况下，输送量可用我公司的CAD计算机辅助设计程序算得。
  - 表中带速一般推荐标准值：0.8、1.0、1.25、1.6、2.0、2.5、3.15、3.5、4.0等；
  - 超出表中的情况，请与我公司技术部联系。

- Tips:
- The conveying capacity in the chart is calculate out by the situation when horizontal transport and the angle of move  $\theta$  is 20°,the trough angle of idler  $\lambda$  is 35°,the delivery value under your circumstance can be carried out by the CAD program designed by our company;
  - The recommended speed in the chart shall be the standard ones such as 0.8、1.0、1.25、1.6、2.0、2.5、3.15、3.5、4.0 and so on;
  - If your situation is over the number value in the chart, please inform our technology department.



# 大倾角带式输送机

## LARGE ANGLE BELT CONVEYOR

### INTRODUCE 简介

主要用于倾角在 -25° ~ 30° 之间的连续式输送设备。除采用60°深槽托辊架结构外，还可根据坡度大小增加挡料防滑装置、KPZ自冷盘式制动装置和BSD断带抓捕装置等。

This equipment is mainly used in dip angle between -25°~ 30°. Except of the 60°deep-trough idler,you can optionally add stopping and antiskid device、KPZ Self cooling disc brake device and BSD broken belt arresting device according to the slope.



### SPECIFICATION 技术参数

型号 Model	带宽 Width (mm)	倾角 Dip angle (°)	带速 Speed (m/s)	输送量 Conveying capacity (t/h)
B650	650	-25 ° ~ 30 °	0.8 ~ 2.5	100 ~ 280
B800	800	-25 ° ~ 30 °	1.0 ~ 2.5	200 ~ 450
B1000	1000	-25 ° ~ 30 °	1.6 ~ 3.15	350 ~ 800
B1200	1200	-25 ° ~ 30 °	1.6 ~ 3.15	630 ~ 1250
B1400	1400	-25 ° ~ 30 °	2.0 ~ 3.5	900 ~ 2300

注：1、表中输送量按动堆积角  $\theta$  为20°、托辊槽角  $\lambda$  为60° 计算得到，具体情况下，输送量可用我公司的CAD计算机辅助设计程序算得；  
2、表中带速一般推荐标准值：0.8、 1.0、 1.25、 1.6、 2.0、 2.5、 3.15、 3.5 等；  
3、超出表中的情况，请与我公司技术部联系。

Tips: 1.The conveying capacity in the chart is calculate out by the situation when horizontal transport and the angle of move $\theta$ is 20°,the trough angle of idler  $\lambda$  is 60°,the delivery value under your circumstance can be carried out by the CAD program designed by our company;  
2、The recomanded speed in the chart shall be the standard ones such as0.8、 1.0、 1.25、 1.6、 2.0、 2.5、 3.15、 3.5 and so on;  
3、If your situation is over the number value in the chart, please inform our technology department.

### 技术优势 TECHNICAL SUPERIORITY

BSD断带抓捕装置属于全带面、上下带同时抓捕，可靠性高，为大倾角、长距离、大运量的带式输送机的安全运行提供保障。

BSD Broken belt arresting device can work in the whole belt and can grab the upper belt and the lower belt at the same time. Provided protection for the safe operation of belt conveyor with large angle, long distance and large capacity.

KPZ自冷盘式制动装置能够实现可控制动停车，避免输送带在停车过程中张力急剧变化而导致输送带“堆叠”。

KPZ Self cooling disc brake device can achieve controllable brake to avoid the conveyor belt "stacking" during the breaking due to the sharp change in tension.



# 波状挡边带式输送机

## BELT CONVEYOR OF CORRUGATED SIDEWALL

### INTRODUCE 简介

波状挡边带式输送机适用于30° ~90° 范围内散装物料输送，采用的是具有波状挡边和横隔段的输送带，可以节省大量的占地面积，彻底解决普通带、花纹带式输送机所不能达到的输送高度。

Belt conveyor of corrugated sidewall is mainly used in the dip angle between30°~90°to transport bulk material. The sidewall can save a lot cover area and completely get to the height which ordinary belt and pattern belt conveyor cannot reach.



### SPECIFICATION 技术参数

带宽 Width (mm)	50			650			800				1000			
	挡边高 Side height (mm)	80	120	160	80	120	160	120	160	200	240	160	200	240
带速 Speed (m/s)	0.8~2.5													
倾角 Dip angle (°)	30° ~ 90°													
最大输送量 Max capacity (m³/h)	78	104	130	118	156	210	248	340	370	520	465	518	708	
功率 Power (Kw)	1.5~22			1.5~30			1.5~55				4.0~75			

注：

1、表中输送量Q按  $\beta=30^\circ$  该规格下，允许最大带速，最小间隔板距计算得到，具体情况下，输送量可用我公司的CAD计算机辅助设计程序算得；  
2、表中带速一般推荐标准值：0.8、 1.0、 1.25、 1.6、 2.0、 2.5 等；  
3、超出表中的情况，请与我公司技术部联系。

Tips:

1.The largest conveying capacity Q is under $\beta=30^\circ$ with the maximum belt speed and the minimum distance of the spacing board,the delivery value under your circumstance can be carried out by the CAD program designed by our company;  
2.The recomanded speed in the chart shall be the standard ones such as0.8、 1.0、 1.25、 1.6、 2.0、 2.5and so on;  
3.If your situation is over the number value in the chart, please inform our technology department.

# DX型钢绳芯带式输送机

## DX STEEL CORD BELT CONVEYOR

### INTRODUCE 简介

DX型钢绳芯带式输送机是采用钢绳芯胶带作牵引和承载构件的一种大容量、长距离、高效能连续输送设备，可广泛用于冶金、煤炭、交通、电力、矿山、化工等部门的连续输送系统，用于输送松散密度为500~2500Kg/m3的各种散状物料和成件物品。具有生产效率高、输送量大、能源消耗少，可实现连续长距离运输，工作平稳可靠、噪声小、污染低、结构简单、运行费用低等特点。

DX steel cord belt conveyor is a high-capacity, long distance, highly efficient continuous conveying equipment. It adopts steel cord rubber belt as traction and bearing carrier. And it can be widely used as continuous conveyor system in metallurgy, coal, traffic, electricity, mining, chemical industry and other departments, It is used for all kinds of bulk material and packed material, which the bulk density is 500~2500Kg/m3. It has so many features, such as high production efficiency, large conveying capacity, less energy consumption, long distance transportation, working stable and reliable, lower noise, less pollution, simple construction, lower operating cost, and so on.

DX型钢绳芯带式输送机是按部件系列进行设计，工作环境温度为-25~+40℃，对于高温、寒冷、防爆、防腐蚀、耐酸碱、防水等有特殊要求的工作场所，应另行采取相应的防护措施。设计者可根据输送工艺要求，按不同的地形、工况进行选型设计、计算并组合成整台输送机。

DX steel cord belt conveyor designed according to component series, the working environment temperature is -25~+40℃. For some workplaces, which have special requirements, such as high temperature, cold, anti-explosion, anti-corrosion, anti-acid and alkali, waterproof, etc. There should adopt other corresponding protective measures. The designer can make the type selection design, compute and combine the whole belt conveyor in accordance with the different terrain and conditions, according to the conveying process requirement.

### SPECIFICATION 技术参数

胶带宽度 Width of the rubber belt (mm)	胶带速度 Speed of the rubber belt (m/s)	最大输送量 Max conveying capacity (t/h)	最大倾角 Max inclination (deg)
800	2.0;2.5;3.15	550;688;865	22°
1000	2.0;2.5;3.15	888;1100;1400	22°
1200	2.0;2.5;3.15;4.0	1300;1625;2050;2600	22°
1400	2.0;2.5;3.15;4.0	1800;2250;2830;3600;4500	22°
1600	2.0;2.5;3.15;4.0;5.0	2380;2975;3850;4760;5950	22°
1800	2.0;2.5;3.15;4.0;5.0	3070;3838;4840;6140;7675	22°
2000	2.0;2.5;3.15;4.0;5.0	3840;4800;6050;7680;9600	22°
2200	2.0;2.5;3.15;4.0;5.0	6120;7650;9639;12240;15300	22°
2400	2.0;2.5;3.15;4.0;5.0	7531;9414;11861;15062;18828	22°



### FEATURES 性能特点

输送物料范围广，输送量大。  
It has wide range of the conveying material, and large transport capacity.

输送线路适应性强，运距长。  
The transmission line with high adaptation, long distance transport.

结构简单，装卸料十分方便。  
Sample construction. Material handling is very convenient.

可靠性强，安全性高。  
High reliability and safety.

基建投资省，营运费、能耗低，维修费用少。  
less infrastructure investment and operating expenses, lower energy consumption, less maintenance costs.

# DTII(A)型固定式带式输送机

## DTII (A) FIXED BELT CONVEYOR

### INTRODUCE 简介

DTII (A) 型带式输送机是在DTII型带式输送机近年来的应用情况、用户的使用经验及要求上优化推出的新型固定式带式输送机，扩充了部分部件的品种规格，改进了部分结构，修改了错误。在修改设计中所采用的轴承紧固件，专用材料及制造装配技术条件等均使用目前最新国家标准。

DT II (A) is a optimized type of fixed belt conveyor which has added new model , improved structure and modified the error based on the years of experience. In the new design , the bearing fasteners ,proprietary material and manufacturing assembly technology we adopt are all suited for the newest national standard.

DTII (A) 固定带式输送机是以棉帆布、尼龙、聚酯帆布、钢绳芯输送带作曳引构件的连续输送设备，广泛应用于冶金、矿山、煤炭、电站、建材等各个行业，用于输送松散密度为500~2500Kg/m3的各种散状物料和成件物品。具有生产效率高、输送量大、能源消耗少，可实现连续长距离运输，工作平稳可靠、噪声小、污染低、结构简单、运行费用低等特点。

DTII (A) fixed belt conveyor uses cotton canvas, nylon, polyester canvas, steel wire core as belt traction components, is widely used in metallurgy, mining, coal, power station and building materials industries, used to transport bulk material and items with loose density of 500-2500 Kg/m3. With high production efficiency, large throughput, less energy consumption, DTII (A) can realize continuous long distance transportation, work stable and reliable, low noise, low pollution, simple structure, low operation cost, etc.

DTII (A) 固定带式输送机是按部件系列进行设计，工作环境温度为-25~+40℃，对于高温、寒冷、防爆、防腐蚀、耐酸碱、防水等有特殊要求的工作场所，应另行采取相应的防护措施。设计者可根据输送工艺要求，按不同的地形、工况进行选型设计、计算并组合成整台输送机。

DTII (A) fixed belt conveyor is designed according to component series, working environment temperature is -25~+40℃. It should have corresponding protection measures for special working environments like the high temperature, cold, explosion proof, corrosion resistance, acid and alkali resistance, waterproof, etc. Designers should pick model , calculate and assemble according to the conveying process requirement, different terrains and working conditions.

### SPECIFICATION 技术参数

带宽 Width (mm)	带速 Speed (m/s)											
	0.8	1.0	1.25	1.6	2.0	2.5	3.15	4.0	4.5	5.0	5.6	6.5
	运量 Q (m³/s)											
500	69	87	108	139	174	217						
650	127	159	198	254	318	397						
800	198	248	310	397	496	620	781					
1000	324	405	507	649	811	1014	1278	1622				
1200		593	742	951	1188	1486	1872	2377	2674	2971		
1400		825	1032	1321	1652	2065	2602	3304	3718	4130		
1600					2186	2733	3444	4373	4920	5466	6122	
1800					2795	3494	4403	5591	6291	6989	7829	9083
2000					3470	4338	5466	6941	7808	8676	9717	11277
2200							6843	8690	9776	10863	12166	14120
2400							8289	10526	11842	13158	14737	17104



### FEATURES 性能特点

DTII (A) 固定带式输送机与其他散状物料运输方式相比，有以下优点：

输送物料种类广泛	Suitable for various kinds of materials
输送能力范围宽	Transmission line adaptable
输送线路适应性强	Flexible loading
装卸料灵活	High reliability
安全性高	High safety
维修费用低	Low maintenance cost

# DTII型固定式带式输送机

## DTII TYPE FIXED BELT CONVEYOR

### INTRODUCE 简介

DTII型固定带式输送机是以棉帆布、尼龙、聚脂帆布、钢丝绳输送带作曳引构件的连续输送设备，广泛应用于冶金、矿山、煤炭、电站、建材等各个行业，用于输送松散密度为500~2500Kg/m3的各种散状物料和成件物品。具有生产效率高、输送量大、能源消耗少，可实现连续长距离运输，工作平稳可靠、噪声小、污染低、结构简单、运行费用低等特点。

DTII type fixed belt conveyor is a continuous conveying belt equipment taking cotton canvas, nylon, polyester canvas, steel cord conveyor belts as traction components , widely used in metallurgy, mining, coal, power, building materials and other industries, and used to transport various loose materials and items of loose bulk density of 500~2500Kg/m3. With high efficiency, high throughput, low energy consumption, it can realize continuous transport over long distances, working stable and reliable, low noise, low pollution, simple structure, low operation cost, etc.

DTII型固定带式输送机是按部件系列进行设计，工作环境温度可为-25~+40℃，对于高温、寒冷、防爆、防腐蚀、耐酸碱、防水等有特殊要求的工作场所，应另行采取相应的防护措施。设计者可根据输送工艺要求，按不同的地形、工况进行选型设计、计算并组合成整台输送机。

DTII type fixed belt conveyor is designed according to component series, and working ambient temperature is -25~+40 degrees. For workplace with high temperature, cold, explosion proof, corrosion resistance, acid and alkali resistance, waterproof, and other special requirements, corresponding protective measures must be taken.The designers could calculate and assemble into the whole conveyor as per different terrain and working condition according to technological require-



### FEATURES 性能特点

固定带式输送机与其他散状物料运输方式相比，有以下优点  
Compared with transportation mode of other bulk materials, fixed belt conveyor has the following advantages

- |          |  |
|----------|--|
| 输送物料种类广泛 | Wide scope for conveying materials     |
| 输送能力范围宽  | Wide range of transmission capacity    |
| 输送线路适应性强 | Conveyor line with strong adaptability |
| 装卸料灵活    | Flexible loading and unloading         |
| 可靠性强     | High reliability                       |
| 安全性高     | High safety                            |
| 维修费用低    | Low maintenance cost                   |

### SPECIFICATION 技术参数

带宽 Width (mm)	带速 Speed (m/s)											
	0.8	1.0	1.25	1.6	2.0	2.5	3.15	4.0	4.5	5.0	5.6	6.5
	运量 Q (m³/s)											
500	69	87	108	139	174	217						
650	127	159	198	254	318	397						
800	198	248	310	397	496	620	781					
1000	324	405	507	649	811	1014	1278	1622				
1200		593	742	951	1188	1486	1872	2377	2674	2971		
1400		825	1032	1321	1652	2065	2602	3304	3718	4130		
1600					2186	2733	3444	4373	4920	5466	6122	
1800					2795	3494	4403	5591	6291	6989	7829	9083
2000					3470	4338	5466	6941	7808	8676	9717	11277
2200							6843	8690	9776	10863	12166	14120
2400							8289	10526	11842	13158	14737	17104

# TD75型固定式带式输送机

## TD75 SERIES BELT CONVEYOR

### INTRODUCE 简介

TD75型带式输送机按其支架结构有固定式的移动式两种：按输送带材料有胶带、塑料带和钢芯带之分。输送机的工作环境温度一般在-10℃--+40℃之间，要求物料温度不超过70℃；耐热橡胶带可输送120℃以下的高温物料。物料温度更高时不宜采用胶带输送机。当输送具有酸性碱性油类物质和有机溶剂等成分的物料时，需采用耐油、耐酸碱的橡胶带式塑料带。TD75型带式输送机的带宽可分为：500~2400mm。用户可根据带式输送机的输送长度，物料的种类、容量、输送量、输送长度等诸因素通过计算确定输送机的布局以及所选用的胶带宽度、帆布层数和胶带厚度。

According to the difference of its supporting frame structure, TD75 series belt conveyor has two models: mobile and stable. Based on the belt material, it can be divided into rubber belt, plastic belt and steel core belt. The working temperature should be between -10℃--+40℃, and the temperature of the material should be below 70℃, but the heat resistant rubber belt can transport material that the temperature is below 120℃。When the material temperature is much higher, then rubber belt is not a good choice. When transporting acidic, alkaline oily materials and organic solvent materials, oil-resistant and acidic & alkaline resistant rubber plastic belt should be adopted. The width range of TD75 belt conveyor is between 500mm and 2400mm. Users can determine the layout, width, number of rubber layers and belt thickness by calculating material type, weight, length, etc.

### SPECIFICATION 技术参数

带宽 Width (mm)	带速 Speed (m/s)											
	0.8	1.0	1.25	1.6	2.0	2.5	3.15	4.0	4.5	5.0	5.6	6.5
	运量 Q (m³/s)											
500	69	87	108	139	174	217						
650	127	159	198	254	318	397						
800	198	248	310	397	496	620	781					
1000	324	405	507	649	811	1014	1278	1622				
1200		593	742	951	1188	1486	1872	2377	2674	2971		
1400		825	1032	1321	1652	2065	2602	3304	3718	4130		
1600					2186	2733	3444	4373	4920	5466	6122	
1800					2795	3494	4403	5591	6291	6989	7829	9083
2000					3470	4338	5466	6941	7808	8676	9717	11277
2200							6843	8690	9776	10863	12166	14120
2400							8289	10526	11842	13158	14737	17104

### BASIC STRUCTURE 基本结构

驱动部分:驱动装置是由驱装架、电动机、高速联轴器、减速器、减速联轴器组成。根据布置要求:驱动装置设有左装和右装两种。  
Driving part: The driving device consists of driving frame, motor, high speed coupling, reducer, reducing coupling. It is divided into left assembling and right assembling according to the layout requirement.

滚动部分:分传动滚筒和改向滚筒两大类。  
Rotating part: It has two main categories: driving roll and direction reversion.

托辊部分:分槽形、平行、调心和缓冲托辊等。  
Roll part: It consists of groove, parallel, regulating and buffer rolls.

清扫部分:分弹簧清扫器和空段清扫器。  
Clearing part: Including spring cleaner and unleaded cleaner.

卸料部分:分固定式犁式卸料器和电动卸料器。  
Discharging part: Including stationary plough discharger and electrical discharger.

制动部分:有带式逆止器和滚柱逆止器两种。  
Braking part: Belt type non-return device and roller non-return device.

附件:在罩壳、导料槽、漏斗等。  
Accessories: Cover, guiding chute and funnel.

# 圆管状带式输送机

## PIPE BELT CONVEYOR



### INTRODUCE 简介

圆管带式输送机是在槽形带式输送机基础上发展起来的一类特种带式输送机，采用数个(通常为六个)托辊组成的正多边形托辊组以强制输送带形成圆管状，密闭地连续输送各种粉状、粒状和块状等松散物料。圆管带式输送机在不断研究及实践的基础上，已逐步总结出一整套较为系统的集设计、制造、安装、调试和检验的标准和办法，并已形成了系列。广泛应用于电力、建材、化工、冶金、矿山、煤炭、港口、粮食等各行业。

Pipe conveyor is a special belt conveyor, which is developed from traditional trough-belt conveyor. It uses numbers of rollers(usually it is six rollers) to form polygon roller group which can make the belt into round pipe compulsively. It can transport loose material, such as kinds of powder, coarse size, and so on. Under the constant study and practical works, we had made a general summary of design, manufacture, installation, commission, and inspection standard. It widely used into power industrial, construction, chemical, metallurgy, mining, coal, port, and so on.

### FEATURES 性能特点

圆管带式输送机除了具有通用带式输送机的输送能力大、结构简单、使用方便、适应性强等特点外，还有以下优点：  
Except the big transport ability, simple structure, easy using, and strong flexibility, it also has following advance:

输送物料种类广泛。	It can transport kinds of material widely.
密封输送物料，可以减轻对环境的污染。	Closed transportation, it can reduce the environment pollution.
物料不易粘附在输送带上，输送带容易清扫。	Easy sweeping, the material is not easy to stick on the belt.
能以较小的曲率半径实现空间转弯运行。	It can realize the turning in small radius of curvature.
可以实现大倾角输送。	It can transport inge dip angle.
可利用输送带的往复运行实现双向输送物料。	It can realize the both way transport using the belt conveyor's reciprocating running.
节省占地空间。	Saving operation space.

### SPECIFICATION 技术参数

管径 Diameter	150	200	250	300	350	400	500	600	700	850
带宽 Width	600	780	780	1150	1350	1600	1900	2250	2650	3150
断面积100% Area 100%	0.018	0.031	0.053	0.064	0.09	0.147	0.21	0.291	0.3789	0.5442
断面积75% Area 75%	0.013	0.023	0.04	0.048	0.068	0.11	0.157	0.218	0.2842	0.4081
最大块度 Max Fragmentation	30-50	50-70	70-90	90-100	100-120	120-150	150-200	200-250	250-300	300-4000

# DTL型固定煤矿用带式输送机

## DTL SERIES FIXED COAL RIBBON CONVEYOR

### INTRODUCE 简介

DTL型固定煤矿用带式输送机主要用于煤矿井下顺槽运输、巷道掘井运输，是有塑性整芯、橡胶面整芯及钢丝绳芯阻燃输送带作曳引构件的连续输送设备，可广泛用于煤矿（包括井下）输送原煤及矸石等散状物料，是综合和一般机采工作面不可少的主要配套设备之一。该系列矿用带式输送机的电气设备具有防爆性能，允许在有煤尘和瓦斯的矿井下使用。

DTL series fixed coal ribbon conveyor mainly used on underground gateway transportation, Roadway digging Wells transportation of coal. It is a constantly transportation device with Plastic whole core , Rubber surface whole core and steel core conveyor belt as Traction components. It is widely used on(Underground) transporting bulk material Such as raw coal and gangue .It is a comprehensive and one of the main equipments for general mechanized mining face .The electrical equipment of this system adopts explosion protection performance which can be used under gas and coal dust.



### FEATURES 性能特点

具有运输量大、运输距离长、爬坡能力高、设备故障少、运营成本低等显著特点。  
It can achieve heavy transportation load, long transportation distance, high gradeability, lower Device fault, lower maintenance costs and so on.

### SPECIFICATION 技术参数

Width 带宽 (mm)	Speed 带速 (m/s)	capacity 输送量 (t/h)	Power 功率 (Kw)
800	2.5	600	160
1000	2.5	1000	2×160
	3.15	1100	220
	3.5	1000	3×630
1200	2.5	1300	250
	3.15	1650	2×280
	3.15	457	3×500
1400	2.5	1750	250
	3.15	2400	280
	3.15	2400	2×315
	3.15	1650	40
	4.0	2300	3×630

Width 带宽 (mm)	Speed 带速 (m/s)	capacity 输送量 (t/h)	Power 功率 (Kw)
1600	4.0	2000	3×500
	4.0	3500	3×500
	5.0	3500	3×1070
1800	4.5	5700	3×1070
	4.5	4000	3×1650
	4.5	4000	3×1800
2000	4.0	4200	2×800
	5.0	5000	400
2200	2.5	1000	75
	4.0	5000	800

移置式带式输送机

SHIFTING BELT CONVEYOR

INTRODUCE

简介

移置式带式输送机是根据采掘和排土工艺的需要而设计的一种新型带式输送机。用在露天采矿场和排土场工作面，根据作业需要可移设的散装物料搬运设备。常与斗轮挖掘机配合在采面或与排土机配合在排土场使用。该机无水泥基础来固定输送机，它可随采掘和排土机械设备改变工作面而改变其布置位置。是目前冶金矿山、大型露天煤矿、发电厂、港口等最理想的带式输送设备。

Shifting belt conveyor is new type and specially designed for excavating and dumping process. It is wildly used for open case mining and dunnping, and also can be moved according the location of the material. And usually match bucket-wheel for excavating and dumping work. It is fixed but no need for cement foundation, and change the location according to working site of excavating and dumping. It is wildly used for mining, big open cast coal, power station, sea port ect.



FEATURES

性能特点

移置式带式输送机一般根据采场（或排料场）工作面的推进，在不需拆卸机械、电气设备以及胶带的情况下，就可进行整机移动。同时也可延伸或缩短其长度。移置式带式输送机在露天作业并经常移置，其结构适应当地气候和地面条件，设备无固定基础（头、尾部带锚固装置），并对地面的比压较小。它具有效率高、成本低、工作安全、节省劳动力、易于实现自动化等多种优点，已成为露天矿开采中高效率而且较经济的新型运输工具。

shifting belt conveyor can move without disassemble electric control, rubber belt, Mechanical, following the stope, and change the length longer or shorter. shifting belt conveyor change the location all the time, adapt the climate locally, there is no fixed foundation, less pressure for ground. High efficiency, low cost, safe, labor saving, easy for automatic operation, already come to the new tool and economic belt conveyor.

SPECIFICATION

技术参数

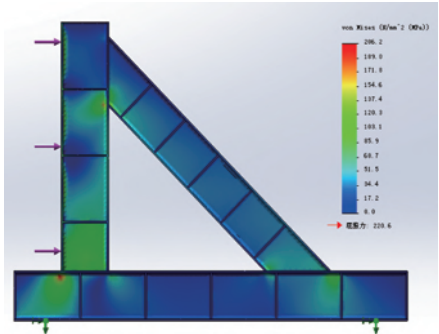
带宽 Width (mm)	带速 Speed (m/s)											
	0.8	1.0	1.25	1.6	2.0	2.5	3.15	4.0	4.5	5.0	5.6	6.5
	运量 Q (m³/s)											
1200					1300	1625	2050	2600				
1400					1800	2250	2830	3600	4050			
1600					2380	2975	3850	4760	5355	5950		
1800					3070	3838	4840	6140	6908	7675	8596	9978
2000					3840	4800	6050	7680	8640	9600	10752	12480
2200					6120	7650	9639	12240	13770	15300	17136	19890
2400					7531	9414	11861	15062	16945	18828	21087	24476

设计计算及受力分析

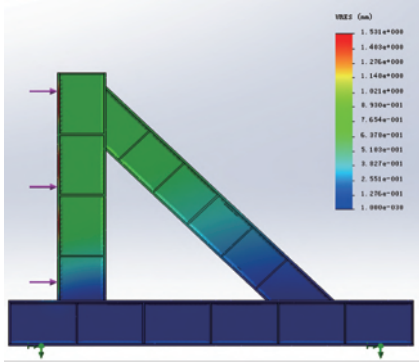
DESIGN CALCULATION AND FORCE ANALYSIS

采用ISO5048国际标准进行计算，包括运行阻力、驱动功率及沿线各点张力的计算，并以此为依据进行总体方案布置和部件选型，保证了设计的可靠性和先进性。运用SolidWorks对皮带机传动机架、驱动机架等重要部件进行建模与分析,通过逐点计算各点张力值,得出机架在输送机在运行过程中所受的力,求解出机架的应力图及位移图,为机架的优化提供了依据。

ISO5048 international standard is used to calculate, including running resistance、driving power and tension along the line. We choose general layout and component selection based on these data to ensure the reliability and advancement.We also use SolidWorks to modeling and analysis vital parts such as transmission and drive frame of the belt conveyor,we calculate point-by-point and finally obtain the stress diagram and displace-



位移图 Displacement diagram



应力图 stress diagram

皮带机选型

BELT CONVEYOR SELECTION PARAMETERS

PRODUCT SPECIFICATIONS

产品规格表

带宽 Width 块度 lumpiness	500	650	800	1000	1200	1400	1600	1800	2000	2200	2400
最大块度 lumpiness	100	150	200	300	350	350	350	350	350	350	350

各种带宽适用的最大块度 maximum lumpiness of various width

带宽 Width (mm)	500	650	800	1000	1200	1400	1600	1800	2000	2200	2400
代码 code	01	02	03	04	05	06	07	08	09	10	11

不同物料的最大运角 The biggest transportation Angle of different materials

CHARACTERISTIC OF MATERIAL

物料特性表

物料种类 type of material	角度 angle	物料种类 type of material	角度 angle
煤块 Coal-rock	18 °	筛分后的石灰石 limestone	12°
煤块 Coal-rock	20 °	干沙 Dry sand	15°
筛分后的焦炭 screened coke	17 °	未筛分的石块 stones	18°
0-350mm矿石 ore	16 °	水泥 cement	20°
0-200mm油田页岩 Oil shale	22°	干松泥土 Dry and soft soil	20°

CHARACTERISTIC OF BULK MATERIALS

各种散状物料的特性

物料名称 name	松散密度 bulk density ×10 <sup>3</sup> kg/m <sup>3</sup>	安息角 angle of repos	运行方向最大倾斜角 Running direction of maximum slope
无烟煤(块) anthracite (piece)	0.9~1.0	27	15~16
无烟煤(细碎) anthracite (broken bits)	1.0	27	18
褐煤块 lignite blocks	0.7~0.9	35~45	18
粉煤powdered coal、精煤clean coal、中煤midding coal、尾煤tailing	0.6~0.85	45	20~21
原煤 raw coal	0.85~1.0	50	18~20
焦炭 coke	0.5~0.7	50	17~18
焦炭（粉粒状）coke(granularity)	0.4~0.56	30~45	20
铁矿石iron ore、石灰石limestone 岩石rock、（块度均匀）Uniform blocks	1.6	35	14~16
破碎的石灰石crushed（大块）big （小块）small	1.6~2.0 1.2~1.5	38	18 15
干 砂 dry san	1.3~1.4	30~35	16
湿 砂 wet sand	1.4~1.9	45	20~24
废型砂 Type waste sand	1.2~1.3	39	20
混有砾石的砂（湿）sand with gravel(wet)	2.0~2.4	30~35	18~20

物料名称 name	松散密度 bulk density ×10 <sup>3</sup> kg/m <sup>3</sup>	安息角 angle of repos	运行方向最大倾斜角 Running direction of maximum slope
干松泥土 dry loose soil	1.2~1.4	35	20
湿土 wet soil	1.7~2.0	30~45	20~23
油母页岩 oil bearing shale	1.4	39	18~22
高炉渣 blast furnace slag	1.3	35	18~20
水泥 cement	1.2~1.5	30~40	15~20
盐 salt	0.8~1.3	25	20
碎石和砾石 Rock and gravel	1.5~1.8	30~40	16~20
铁矿石 iron ore	1.7~2.5	35	18~20
铁矿石块 iron ore stone	2.5~3.0	32	15
剥离物 ouerburden material	1.6~1.7	25	17
谷物 grain	0.7~0.85	24	16
化肥 fertilizer	0.9~1.2	18	12~15

带速、带宽与输送能力关系表

RELATION TABLES ABOUT BELT SPEED BELT WIDTH AND DELIVERY CAPACITY

Id. B.mm v.m <sup>3</sup> /s m <sup>3</sup> h	0.8	1.0	1.25	1.6	2.0	2.5	3.2	4.0	(4.5)	5.0	(5.6)	6.5
500	69	87	108	139	174	217						
650	127	159	198	254	318	397						
800	198	248	310	397	496	620	781					
1000	324	405	507	649	811	1014	1278	1622				
1200		593	742	951	1188	1486	1872	2377	1674	2971		
1400		825	1032	1321	1652	2065	2602	3304	3718	4130		
1600					2186	2733	3444	4373	4920	5466	6122	
1800					2795	3494	4403	5591	6291	6989	7829	9083
2000					3470	4338	5466	6941	7808	8676	9717	11277
2200							6843	8690	9775	10853	12166	14120
2400							8289	10526	11842	13158	14737	17104

注：1. 输送能力 L 值系按水平运输，动堆积角 θ 为 20°，托辊槽角 λ 为 35°时计算的。  
delivery capacity is calculated by the circumstance of horizontal transport, angle of move θ is 20 ° Roller groove Angle λ is 35°  
2. 表中带速 (4.5) 、(5.6)m/s 为非标准值，一般不推荐选用。  
Belt speed in the table (4.5) and (5.6) m/s is not standard values, generally is not recommended to choose.

THE RELATIONSHIP OF TRANSMISSION FORM AND TRANSMITTED POWER

传动型式与传递功率关系

传动型式 drive	功率范围 power range	备注
弹性联轴器直接传动 direct action by flexible coupling	2.2~37	功率≤200kW 时电压为 380V 功率≥220kW 时电压为 6000V  注： 除电动滚筒直接传动外， 其余传动型式均配相应的 减速器。  Tip: Except the motorized pulley is direct drive, The rest of the driving type with corresponding gear reducer.
Y 系列电机加液力耦合器 Y series electrical machine	45~315	
电动滚筒直接传动 motorized pulley	2.2~55	
绕线式电机 wound-type electromotor	220~800	

CONVEYOR BELT STRENGTH TABLE

输送带强度表

种类 Type	抗拉强度 The tensile strength	输送带宽度 Width										
		500	650	800	1000	1200	1400	1600	1800	2000	2200	2400
帆布带 woven	CC—56	✓	✓	✓	✓	✓	✓					
尼龙布 nylon fabric	NN—100	✓	✓	✓	✓	✓	✓					
	NN—150	✓	✓	✓	✓	✓	✓	✓				
	NN—200		✓	✓	✓	✓	✓	✓	✓			
	NN—250		✓	✓	✓	✓	✓	✓	✓	✓	✓	
	NN—300		✓	✓	✓	✓	✓	✓	✓	✓	✓	
聚酯带 poly	EP—100		✓	✓	✓	✓	✓	✓	✓	✓	✓	
	EP—200		✓	✓	✓	✓	✓	✓	✓	✓	✓	
	EP—300		✓	✓	✓	✓	✓	✓	✓	✓	✓	

种类 Type	抗拉强度 The tensile strength	输送带宽度 Width										
		500	650	800	1000	1200	1400	1600	1800	2000	2200	2400
钢绳芯带 steel core belt	st630			✓	✓	✓	✓	✓				
	st800			✓	✓	✓	✓	✓	✓			
	st1000			✓	✓	✓	✓	✓	✓	✓	✓	✓
	st1250			✓	✓	✓	✓	✓	✓	✓	✓	✓
	st1600			✓	✓	✓	✓	✓	✓	✓	✓	✓
	st2000			✓	✓	✓	✓	✓	✓	✓	✓	✓
	st2500			✓	✓	✓	✓	✓	✓	✓	✓	
	st3150			✓	✓	✓	✓	✓	✓	✓	✓	✓
	st4000				✓	✓	✓	✓	✓	✓	✓	✓
	st4500				✓	✓	✓	✓	✓	✓	✓	✓
	st5000				✓	✓	✓	✓	✓	✓	✓	✓

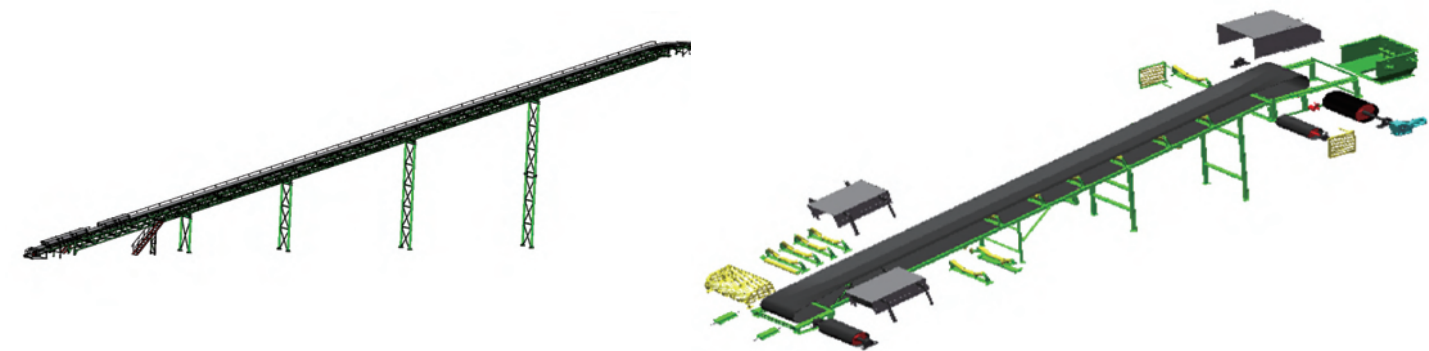
注：□已有相应的部件系列图，以下表格相同。

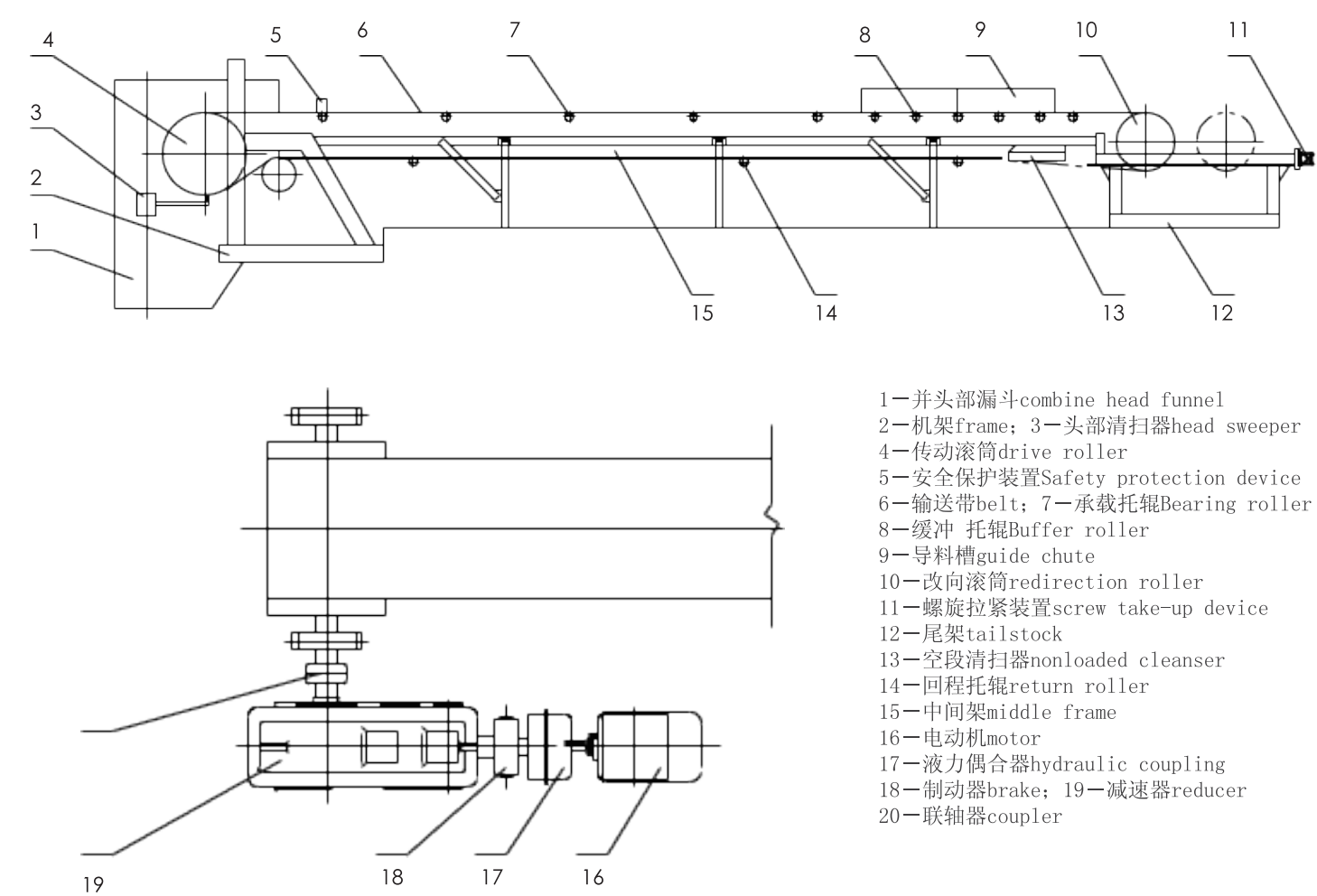
PART NAME

部件名称

带式输送机整体结构见图 2。主要部件如下：输送带，驱动装置（电机、减速器、液力 耦合器、制动器、联轴器、逆止器）或电动滚筒，传动滚筒，改向滚筒，托辊，拉紧装置，清扫器， 卸料器，机架，漏斗，导料槽，安全保护装置等。

Belt conveyor overall structure as shown in figure.2. Main parts as follows Conveyor belt , driving devices(Motor, reducer, hydraulic coupling, Brake, coupling, non-return device)or Electric roller, drive roller, redirection roller, Roller, tension device, sweeper, discharger, Frame, funnel, guide chute, safety protection device.





# 案例

## 印尼3公里长距离空间弯曲带式输送机 Indonesia 3 km long distance belt conveyor

为印尼客户设计、制造的3公里大功率长运距可弯曲的越野带式输送机，运用了特殊支撑脚、内曲线抬高角等结构，实现了皮带机的平面S形转弯和空间上下起伏相结合的运输方式。同时采用了先进的控制技术，如张紧装置采用YZL1-200/20自控液压张紧，启动装置采用CST420K 可控启动传输装置，电控装置采用可编程控制器（PLC）为核心等，保证了客户日运行6000吨的要求。

The 3KM-long distance high power cross-country belt conveyor designed and manufactured for Indonesia Customer use structure such as special supporting leg and inner curve elevation angle to realize the S – shaped obversion in flat and up-and-down in expanse. Besides the YZL1-200/20 hydraulic automatic take up and CST420K controllable transmission device and electronic control device with PLC core ensured the requirement of 6000T per day.



技术参数Technical data:  
B=1000mm L=2920m V=2.5m/s Q=800t/h P=2X315KW



## 中国广东30° 大倾角上运带式输送机 China's Guangdong 30 ° large angle belt conveyors

30° 属于带式输送机的一个极限坡度，容易引发双机功率启动平衡及运行过程中滚料等问题。通过计算，选用了 ST3150 的人字型花纹钢丝绳芯带，成槽型好；为防止滚料，采用了双排 V 型 4 节深槽托辊组，并在适当位置增加了挡料装置。运用德国 VOITH 调速型液力耦合器 YOTcs650，成功解决了双机功率不平衡的问题，保证了整机的安全可靠运行。  
30° is the limiting gradient of the belt conveyor; it is easy to cause the two machine power unbalance and falling grain during the process. We choose ST3150 Y-shaped pattern wire rope core and double row 4 sections V type deep groove rollers, and also have an increase of the blocking device in the appropriate place by calculation. The coupler YOTcs650 from VOITH have successfully solved the problem of the power imbalance between two machines, and ensured the safe and reliable operation of the whole machine.

## 非洲尼日利亚大运量智能型带式输送机 Nigeria large capacity smart belt conveyor

为尼日利亚客户生产的输送机是公司设计最具有先进驱动和监控技术的大型智能输送机，输送量达到了 2000t/h。该输送机采用 ABB 的变频器驱动及液压张紧装置，运用了先进的电控和综合保护系统，并具有通讯、显示、检测、视频监控及严格的自动控制功能。

Nigerian customers to produce conveyor is the most advanced one with monitoring technology, the conveying capacity reach up to 2000 t/h. The conveyor equipped with ABB inverter drive , hydraulic take-up, electronic control and integrated protection system besides, it also have communication, display, detection, video monitoring and automatic control function.

主要参数 Technical data:  
B=1400m L=1100m V=3.5m/s Q=2000t/h P=3X560KW



# Production Bases

## 生产基地



# Enterprise Image

## 企业印象

# Customer Services

## 客户服务

### 售前 Pre-sales Service

帮助客户进行设备选型  
Assistance in model selection

免费安排工程师到现场进行实际勘测和方案设计  
Free examination on the spot & project design by engineers

### 售中 In-sales Service

严格执行质量标准, 出厂产品品质保证  
Strict standards, guaranteed quality

免费提供物流运输信息, 物流运输更多选择  
Free logistics information, various delivery choices

严格执行备发货标准流程, 备货及时准确、发货迅速  
Sufficient stock, instant dispatch

### 售后 After-sales Service

免费安排工程师进行设备基础制作的指导  
Free guidance for building foundation by engineers

提供设备安装、调试等技术指导  
installation and debugging

进行现场一对一操作、维修、保养等培训  
one-to-one training for operation, repair and maintenance

专业售后服务团队, 24小时响应客户需求  
Professional team, round the clock

