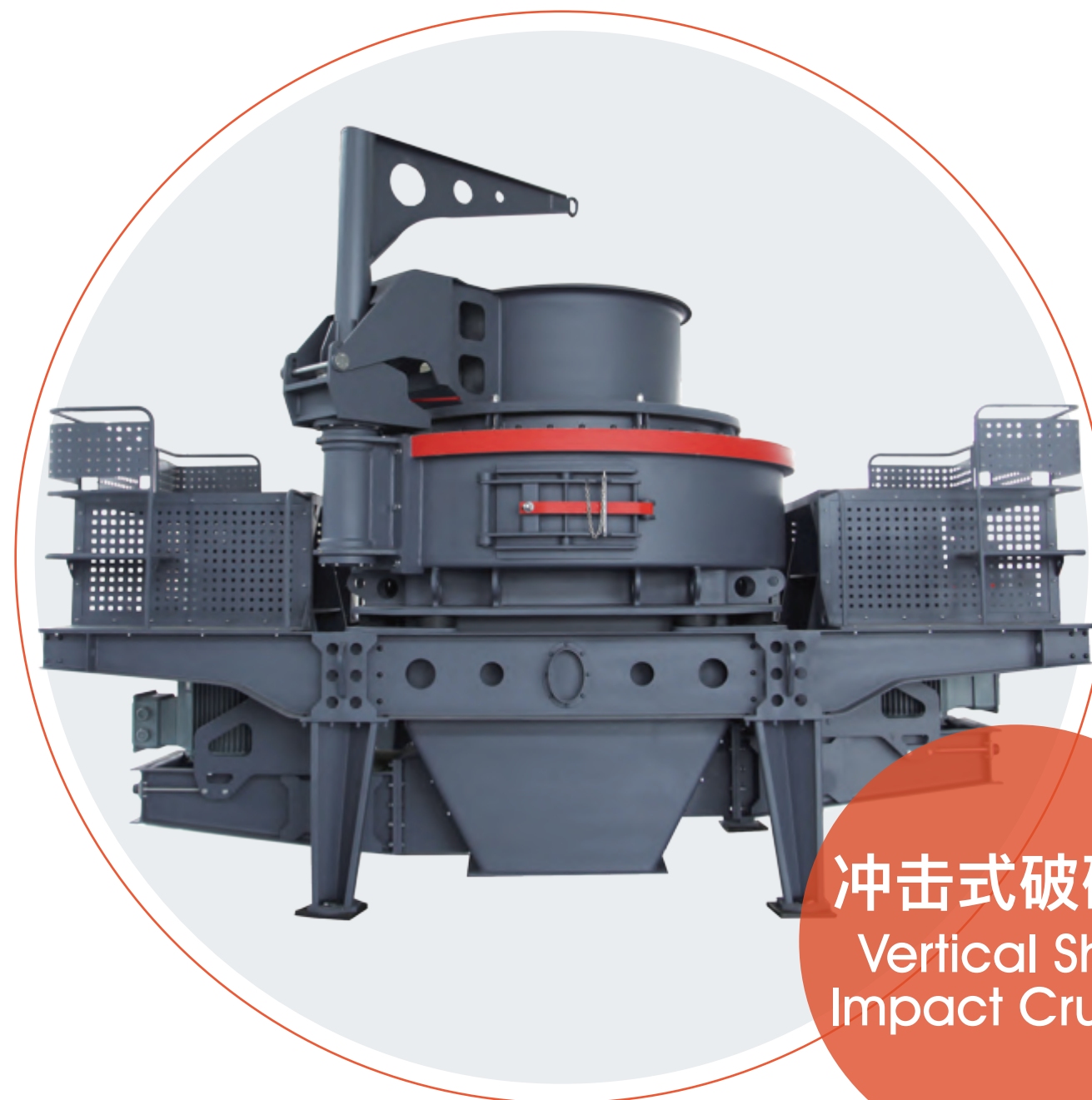


/ Z E N I T H I N T H E W O R L D /



冲击式破碎机
Vertical Shaft
Impact Crusher

NO.416 Jianye road, South Jinqiao Area, Pudong New
Area, Shanghai, China

E-mail
info@zenithcrusher.com

Tel
0086-21-58386256/58386258

Web
www.zenithcrusher.com



【中英V1P1-1811】

VSI6X系列冲击式破碎机

VSI6X Series vertical Shaft Impact Crusher

VSI6X 系列立轴冲击式破碎机采用了全新的四口叶轮结构、专利轴承筒设计、高效低成本破碎腔型和大通过量机架等最新的技术成果, 同时对设备整体的功能进行优化设计, 使得设备的破碎效率、使用成本和操作维护性能等各项指标都达到国内外先进水平。

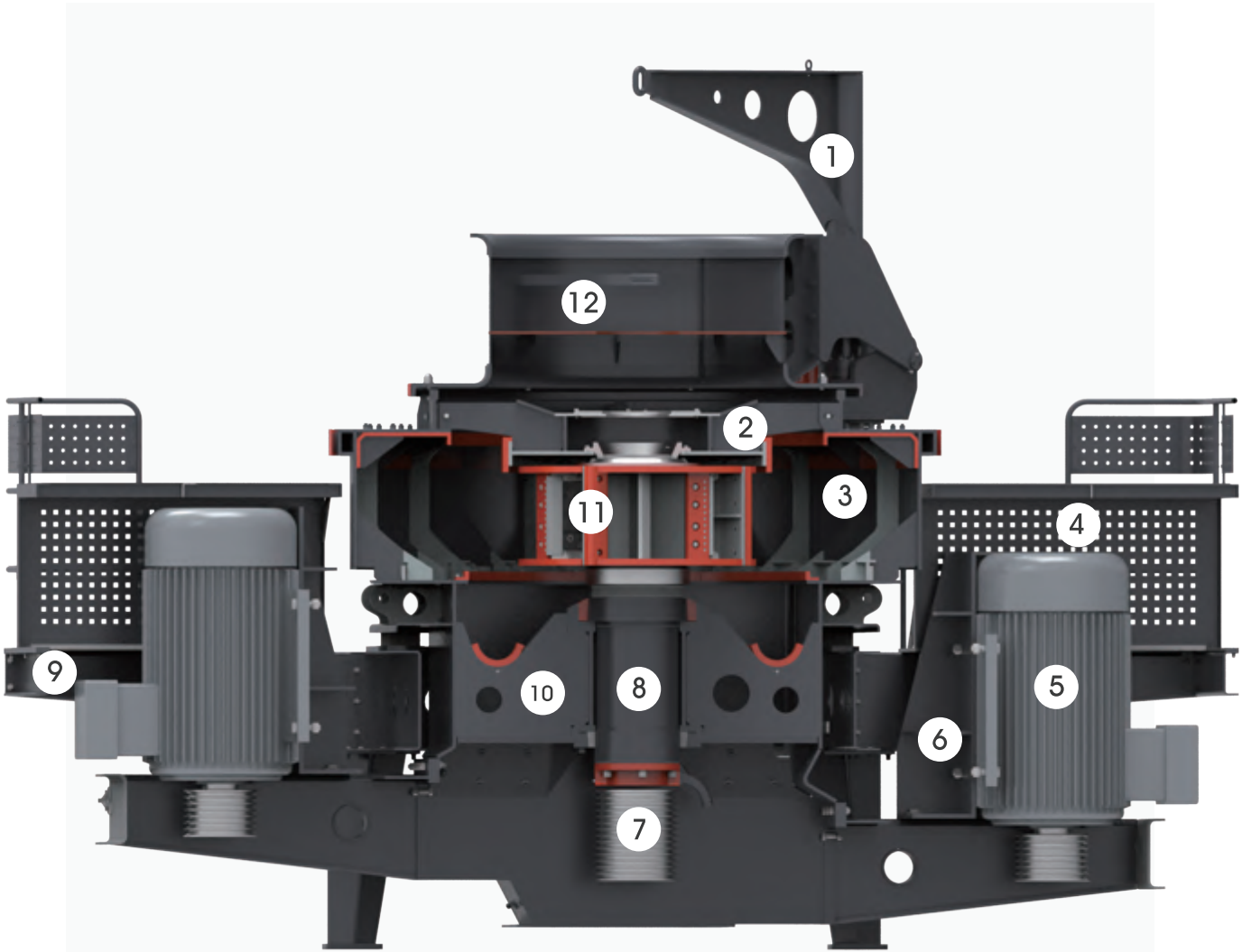
VSI6X series vertical shaft impact crusher adopts a new four-port impeller structure, patent bearing cylinder design, crushing cavity mode with high efficiency and low cost, large throughput rack and other latest technology achievement and also the overall function of the equipment is carried out optimal design, which makes the crushing efficiency, usage cost, operation and maintenance performance and other indexes reach advanced level at domestic and overseas.

VSI6X 系列立轴冲击式破碎机不仅可以用于坚硬岩石的制砂和整形作业、矿石的细碎作业, 还可以用于建筑垃圾、煤矸石、尾矿等固体废弃物处理等, 是目前市场上理想的节能环保型高效率制砂和整形设备。

VSI6X series vertical shaft impact crusher can be used not only in sand making and reshaping of hard rocks and crushing of ore, but also in disposal of construction waste, coal gangue, tailing and other solid waste. Now it is the preferred energy saving and environment protective, sand making and reshaping equipment with high efficiency in the market.

主要结构

Main Components



- 1. 起吊装置 Lifting Device
- 2. 吊盘 Sling tray
- 3. 破碎腔 Crushing cavity
- 4. 踏板架 Pedal Bracket
- 5. 电机 Motor
- 6. 电机座 Motor Bracket

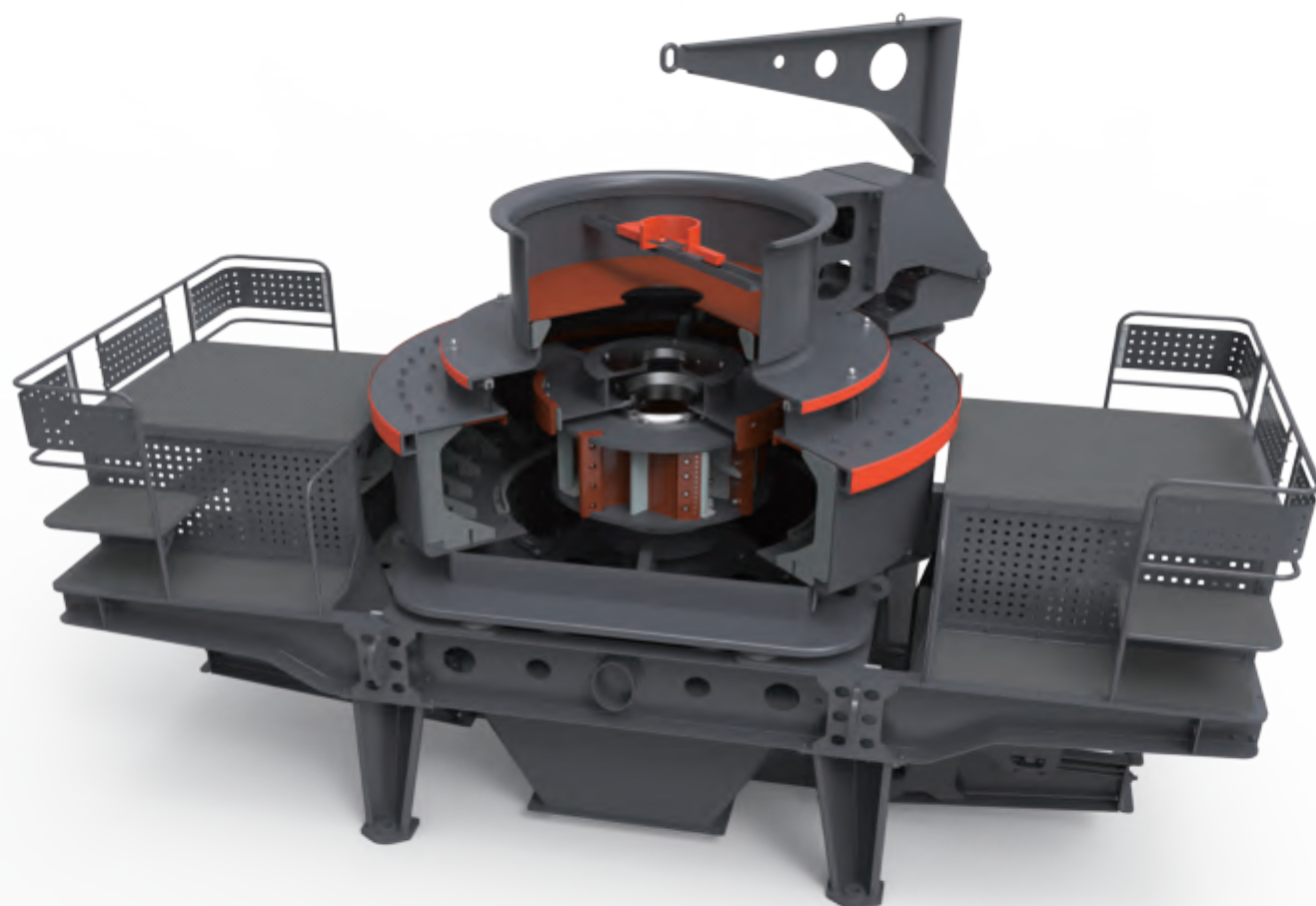
- 7. 皮带轮 Pulley
- 8. 轴承筒 Bearing Cylinder
- 9. 支架 Bracket
- 10. 机架 Frame
- 11. 转子 Rotor
- 12. 进料斗 Hopper

“石打石”与“石打铁”破碎

“Rock on Rock” and “Rock on Iron” Crushing

为了满足不同用户的破碎需求，VSI6X系列立轴冲击式破碎机对破碎腔型进行结构优化，配置“石打石”和“石打铁”破碎形式，且“石打石”料衬和“石打铁”反击块结构都根据设备的工作状态进行特殊设计，使设备破碎效率明显提高。

In order to meet the crushing demand of different customers, VSI6X series vertical shaft impact crusher is carried out optimal design to the crushing cavity mode and configured “rock on rock” and “rock on iron” crushing method. The “rock on rock” material liner and “rock on iron” counter block structure is designed specially according to the working condition of the equipment, which greatly promotes the crushing ratio of the equipment.



“石打石”破碎腔 出料品质高

“Rock on rock” crushing cavity, high-quality in materials

“石打石”破碎腔结构优化，增加料层隔板，可形成密实稳定的石料层，提高破碎效率，配合进料调节环，可以调节中心进料与瀑落料的比例。

The optimization of “rock on rock” crushing cavity structure and the adding of material clapboard forms a dense and stable stone layer, improves the crushing efficiency, coordinates with the regulating ring of the feed stock and adjusts the ratio between the central feeding and the side feeding.

采用“石打石”破碎腔，可以获得更高品质的成品，更优的出料级配和更好的立方体粒型；当用于中高硬物料（石英、玄武岩、花岗岩、河卵石等）破碎时，“石打石”破碎腔可以明显降低易损件使用成本。

The adoption of “rock on rock” crushing cavity can help to get higher quality finished products, better material grading and better cubic particles; when it is used in medium and high hard materials’ (quartz, basalt, granite, gravel and so on) crushing, the “rock on rock” crushing cavity can obviously reduce the cost of wearing parts.

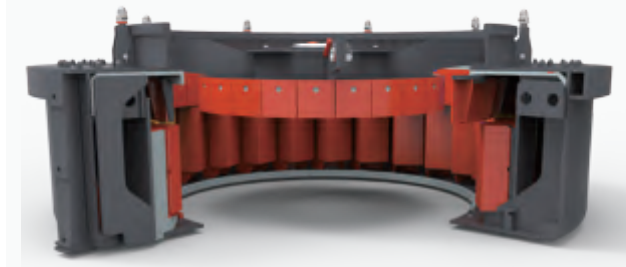


“石打铁”破碎腔 破碎效率高

“Rock on iron” crushing cavity, high efficiency in crushing

当采用“石打铁”破碎腔时，破碎比更大，可以获得更多的成品；该破碎腔型采用全新的结构，优化反击块安装角度，被叶轮抛出的高速物料与其撞击时能量损耗少，破碎效率更高，可以最大限度的获取更多的成品物料。碎时，“石打石”破碎腔可以明显降低易损件使用成本。

When the “rock on iron” crushing cavity is adopted, the crushing ratio is more larger and more finished products can be obtained; this crushing cavity mode adopts new structure and optimizes the installation angle of the counter block, which has low energy loss when the high-speed materials thrown by the impeller impact the crushing cavity, higher crushing efficiency and can help to get more finished materials.

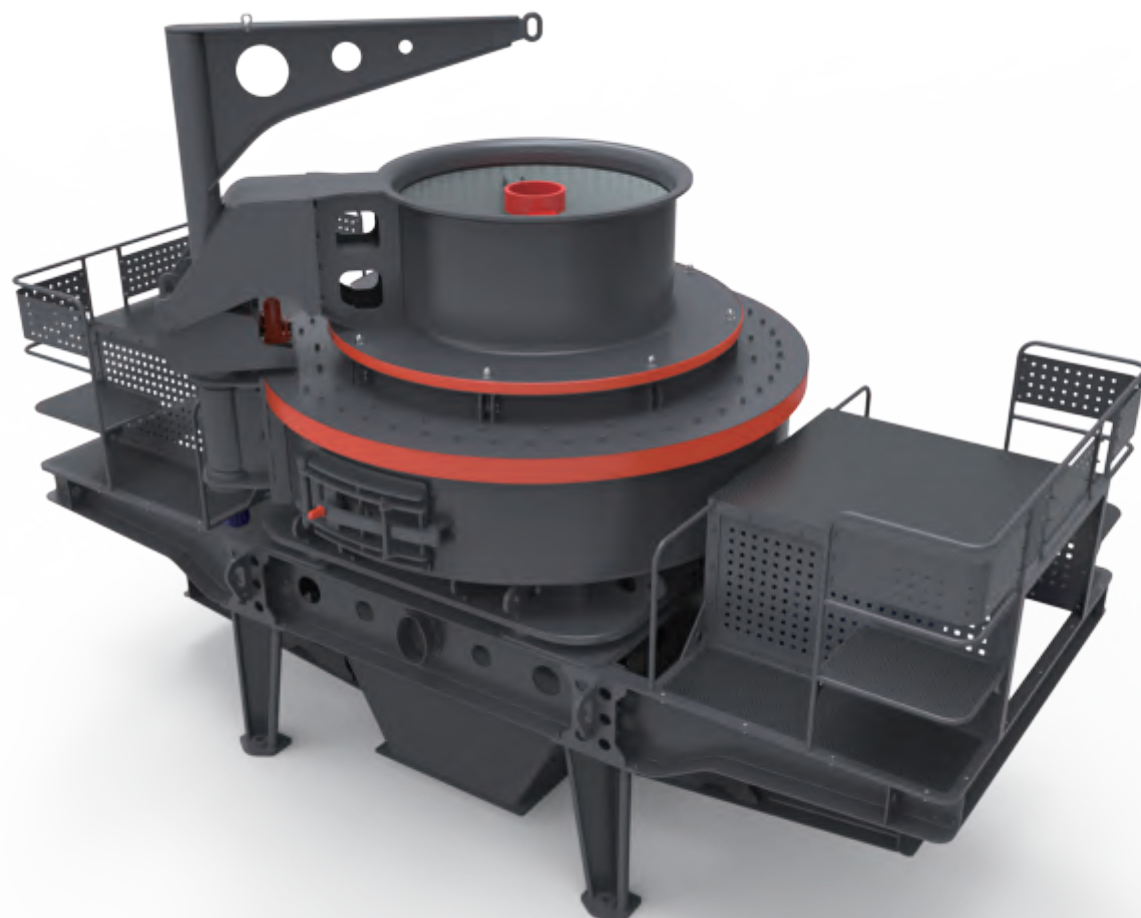


关键部件全新结构设计

New structure design of the key parts

为了保证设备的整体性能, VSI6X 系列立轴冲击式破碎机对关键部件例如叶轮、轴承筒、主机体等进行结构优化设计, 多项国家专利技术确保该破碎设备在破碎作业时高产、高效、低成本。

In order to ensure the overall performance of the equipment, the structure of key parts on VSI6X series vertical shaft impact crusher is optimized, such as the impeller, the bearing cylinder, and the main body. Several national patent technologies ensures the high yield, high efficiency and low cost of the crushing equipment in crushing operation.

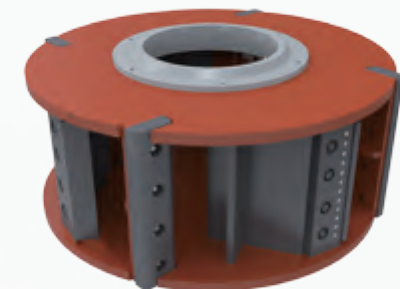


高效四口深腔叶轮

High efficient impeller with four-port deep cavity

为了提高设备的破碎效率, VSI6X 系列立轴冲击式破碎机采用全新的四口深腔叶轮设计, 优化物料抛射角和速度, 物料通过量大, 破碎效率提高, 设备破碎性能较三口叶轮同物料的破碎效率提高 20% 以上。

In order to improve the efficiency of crushing equipment, VSI6X series vertical shaft impact crusher adopts the new design of impeller with four-port deep cavity, which optimizes the throw angle and speed of the material and has large throughput of materials and higher crushing efficiency. The crushing performance of this equipment is 20% higher in crushing efficiency than that of the three-port impeller when the material is the same.



国家专利轴承筒设计

The design of the national patent bearing cylinder

VSI6X 系列立轴冲击式破碎机轴承筒全新的结构设计, 采用特殊的防尘和密封结构, 并获得多项国家专利, 配套进口轴承, 进一步确保转动的可靠性。

The bearing cylinder of VSI6X series vertical shaft impact crusher is new in structure design, adopts special dust-proof and sealing structure, obtains several national patents and is equipped with imported bearings, further ensuring the reliability in rotating.

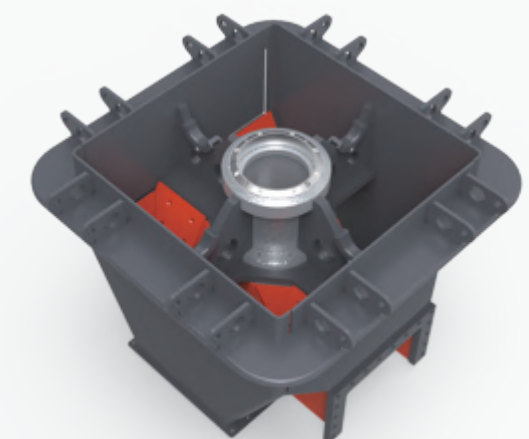


大通过量主机体

Large throughput of the main body

VSI6X 系列立轴冲击式破碎机主机体采用大通过量简约设计, 物料下料顺畅, 能有效防止含水量过大的物料在机体下部堵塞, 提高了整机破碎效率。

The main body of VSI6X series vertical shaft impact crusher is simple in design and has large throughput. The materials are easy to go through, which can efficiently prevent the materials with too much water from blocking the underpart of the main body and raise the crushing efficiency of the whole equipment.



更低的使用和维护成本

Lower cost in usage and maintenance

VSI6X 系列立轴冲击式破碎机对叶轮等部分结构及工艺优化，易损件的使用寿命大幅度提升，较以往设备在同使用条件下，关键易损件寿命提高 30%–200%。

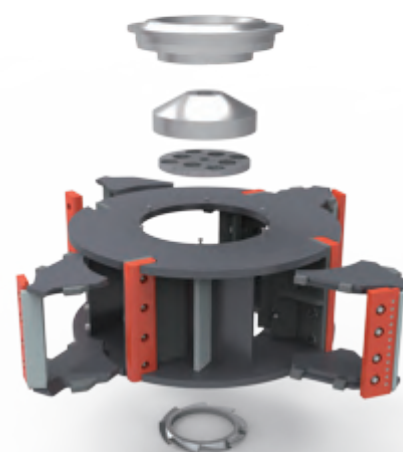
VSI6X series vertical shaft impact crusher is optimized in some structure and craft of the impeller. The service life of some wearing parts is prolonged for 30~200% compared to the former equipment in the same usage conditions.

易损件更耐磨 减少使用成本

More wear-resistant wearing parts, reducing the usage cost

叶轮是设备的核心部件，通过对叶轮部分结构及工艺优化，同时采用高质量耐磨材料，易损件的使用寿命大幅度提升，大大降低了设备的易损件使用成本。当用于超硬物料处理时，推荐用户可以选用“石打石”工作模式，耐磨件更少，使用成本更低。

The impeller is the core part of the equipment. The service life of the wearing parts is greatly improved and the usage cost of the wearing parts is greatly reduced by optimizing some structure and craft of the impeller and using the high-quality wear-resistant materials. When it is used to dispose super hard materials, the “rock on rock” work mode is recommend to the customers, which has less wearing parts and low usage cost.



配置起吊装置 降低维护难度

Configure the lifting device, reduce maintenance difficulty

VSI6X 系列立轴冲击式破碎机配置简单的起吊装置，当进行设备维护时，叶轮和轴承筒吊装无需额外增加大型的吊装设备，大大降低了设备的维护保养难度。

VSI6X series vertical shaft impact crusher is configured with simple lifting device. When the equipment is maintained, the lifting of the impeller and the bearing cylinder don't need to be added extra large lifting devices, greatly lowering the maintenance difficulty of the equipment.



更安全可靠的设备运行方式

Safer and more reliable equipment operation

智能控制的全自动稀油润滑

Intelligent controlled fully automatic diluted oil lubrication

设备润滑采用优化稀油润滑并配备风冷系统，控制系统采用 PLC 智能控制，可以实现全自动润滑控制，缺油保护，润滑温度可调控，为轴承工作提供更理想的工作条件，确保设备持续长时间可靠工作，和传统油脂润滑相比，轴承工作环境更理想，且无需每班停机补油。

The equipment uses the optimized diluted oil lubrication and is equipped with air cooling system. The control system adopts PLC intelligent control and can realize the automatic lubrication control and oil shortage protection. The lubrication temperature can be regulated and controlled, providing a better working condition for bearing operation and ensuring the continuous, long-time and reliable operation of the equipment. Compared to the traditional oil lubrication, the working environment of the bearing is perfect and doesn't need to add oil per shift.

更平稳的双电机驱动

More stable dual-motor drive

VSI6X 系列立轴冲击式破碎机转速高，采用双电机驱动的形式，传动效率更高，设备主轴径向受力更均匀，设备运转更平稳；同时优化了电机座固定结构，电机固定可靠，安装和调节更方便。

VSI6X series vertical shaft impact crusher has quick rotate speed and adopts the dual-motor drive. The drive efficiency is higher, the spindle radial is uniformly forced and the operation of the equipment is more stable; also, it optimizes the fixed structure of the motor base which is fixed and reliable and more convenient in installation and adjustment.



VSI5X系列冲击式破碎机

VSI5X Series Impact Crushers

VSI5X 系列冲击式破碎机是在上一代 VSI 系列冲击破的基础上开发设计的新一代高效立轴冲击式破碎机, 拥有多项自主专利, 生产效率更高, 使用成本更低, 业已成为国内应用较多的立轴冲击式破碎机。

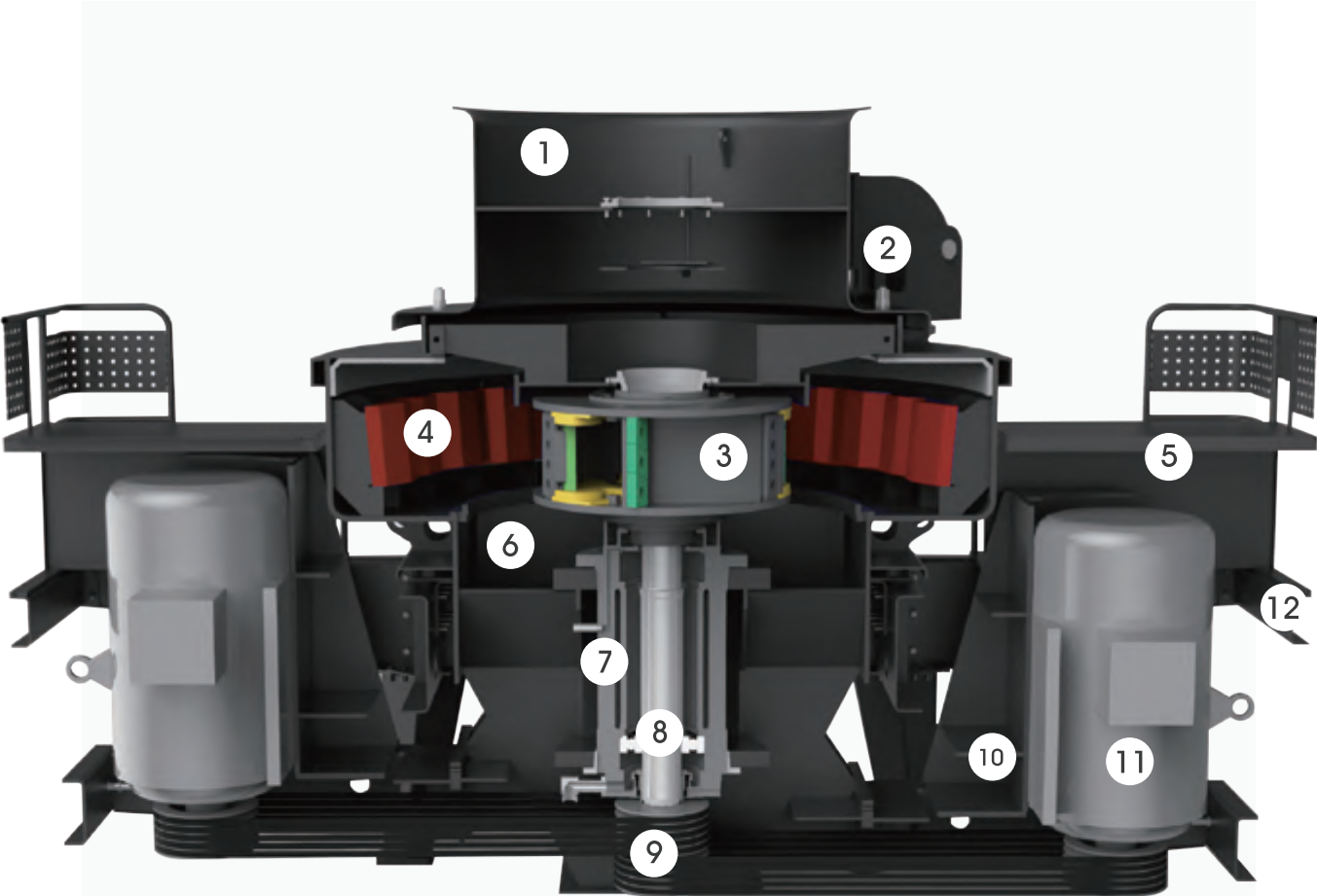
As the vertical shaft impact crushers most widely used at home, the VSI5X series impact crushers are a new generation of high-efficiency vertical shaft impact crushers developed and designed on the basis of the previous generation of VSI series impact crushers, boasting a number of independent patents, as well as higher production efficiency and lower use cost.

VSI5X 系列冲击式破碎机的主要创新在于深腔转子设计, 相比较普通冲击破, 可以大大提高生产效率, 同时还可以减少易损件的磨损, 降低使用升本。

The VSI5X series impact crushers can greatly improve the production efficiency, reduce abrasion of the quick-wear parts and lower the use cost compared with the ordinary impact crushers by virtue of the main innovation of the deep chamber rotor design.

主要结构

Main Components



- | | |
|----------------------------|---------------------------|
| 1. 料斗 Hopper | 7. 轴承筒 Bearing cylinder |
| 2. 顶盖回旋装置 Coping hydraulic | 8. 传动轴 Transmission shaft |
| 3. 转子 Rotor | 9. 皮带轮 Pulley |
| 4. 周护板 Impact plate | 10. 电机座 Motor bracket |
| 5. 踏板架 Pedal bracket | 11. 电机 Motor |
| 6. 机架 Frame | 12. 支架 Bracket |

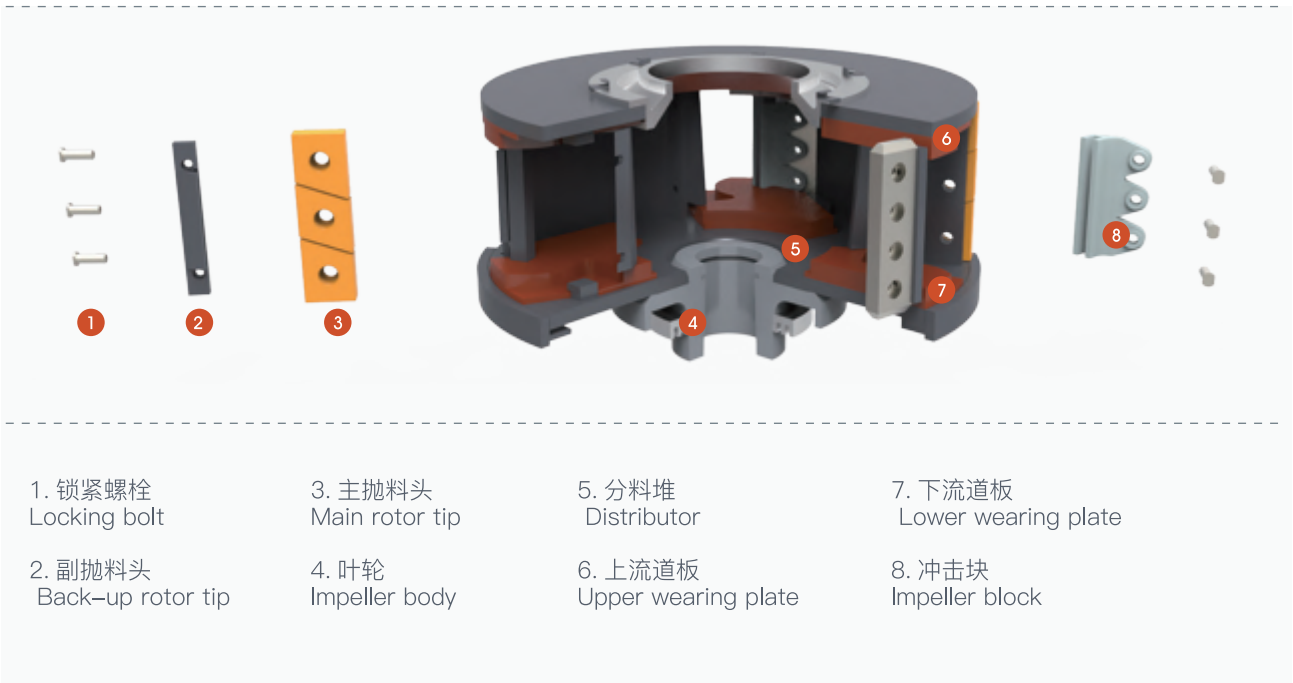


独特的深腔转子

Unique deep rotor

转子是 VSI5X 最核心的部件, B 系列深腔立轴冲击破碎机的成功全在于其全新深腔转子技术的运用。

Rotor is the heart of VSI5X, the success of the Zenith B series VSI attributes to the application of new technology for its deep rotor.

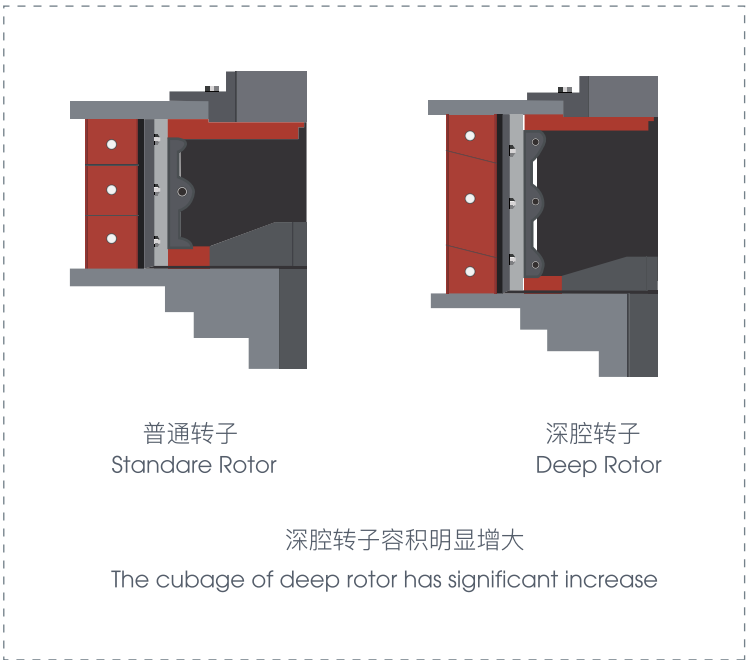


产量大幅度提高

The capacity improve greatly

深腔转子的发射口高度比普通转子大出 50% 左右, 这意味着分料锥和叶轮护口圈之间和上下流道板之间的空间更大。内部空间的增大使转子可以容纳更多的入料, 处理量增加高达 30% 以上。

The port height of deep rotor is about 50% longer than that of normal rotor, which means there is a greater space between distributor and feed eye ring, as well as between the upper and lower wearing plates. With the increased space inside the rotor, more materials can be fed into the rotor, the rotor throughput increases about 30% (and sometimes even more.)



富有竞争力的优势

Competitive advantages

全新散料盘设计, 可快速实现中心给料和瀑落给料的转换减少了停机调整时间。

Brand new distributing plate design realizes the fast transformation between central feeding and cascade feeding, reduce the downtime for adjustment.

独特的液压开顶系统, 可方便快捷移开上盖, 即使只有一人也可轻松更换转子及其配件, 使机器的停机维护时间缩至最短。

Unique hydraulic open-top system can move upper cap conveniently and quaiick. one person is enough for replacing rotor and its spare parts, minimizing machine shutdown maintenance time.

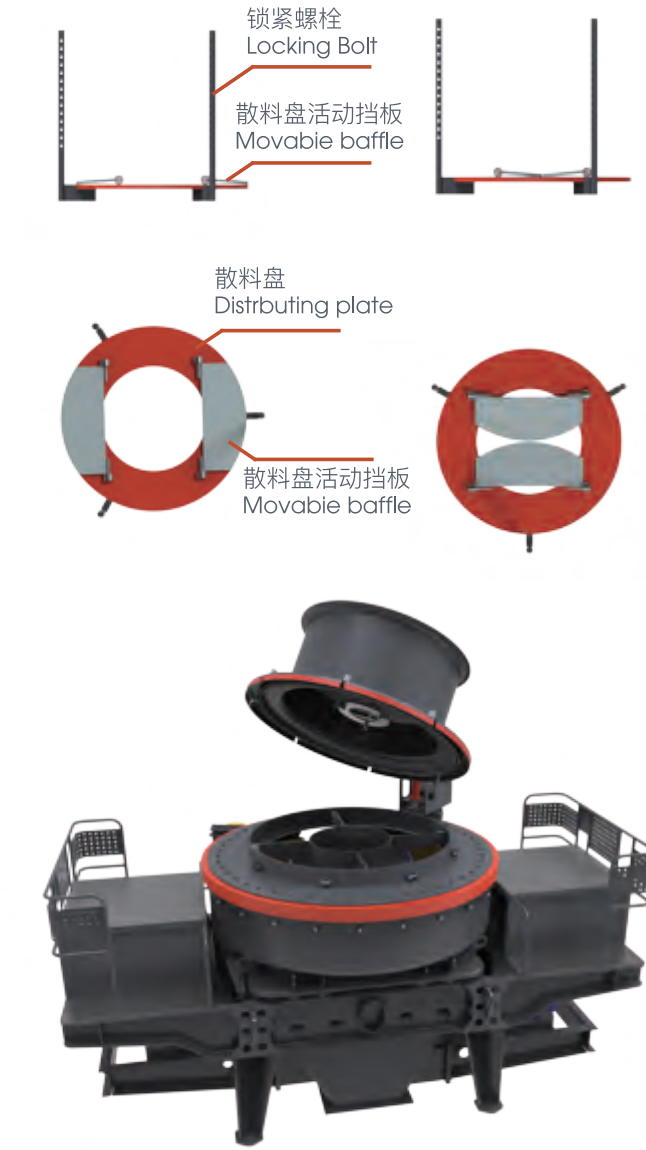
基于其便于操作及维护简易的特点, 使 B 系列深腔立轴冲击破碎机可轻松融入任何已有的石料破碎设备中, 提高现有设备的产量和产品的品质。

Based on convenient operation and easy maintenance character of B series deep rotor vertical shaft impact crusher, it can be easily applied in any existing quarry crushing equipment, enhancing their capacity and product quality.

独特的润滑控制系统, 可以根据机器的使用情况自动调整润滑油供给, 大大节约了人工控制成本, 确保了机器能时刻保持最优工作状态。

Unique lubrication control system can adjust the oil supply automatically according to the machine status greatly reducing manual control cost, ensuring the machine is at its best performance all the time.

机器关键部位采用一流合金材质, 配备优质 NSK 轴承和 P54/55 防护等级的电机 (西门子可选), 确保了 B 系列深腔立轴冲击破碎机在任何工况条件下都能闪耀出卓越的品质之光。



Key parts of machine have adopted first class cemented carbide, and equipped with quality NSK bearing and motor with IP54/55 protection grade (SIEMENS optional), all these factors ensure B series deep rotor vertical shaft impact crusher sparkles its quality light under any working conditions.

VSI系列冲击式破碎机

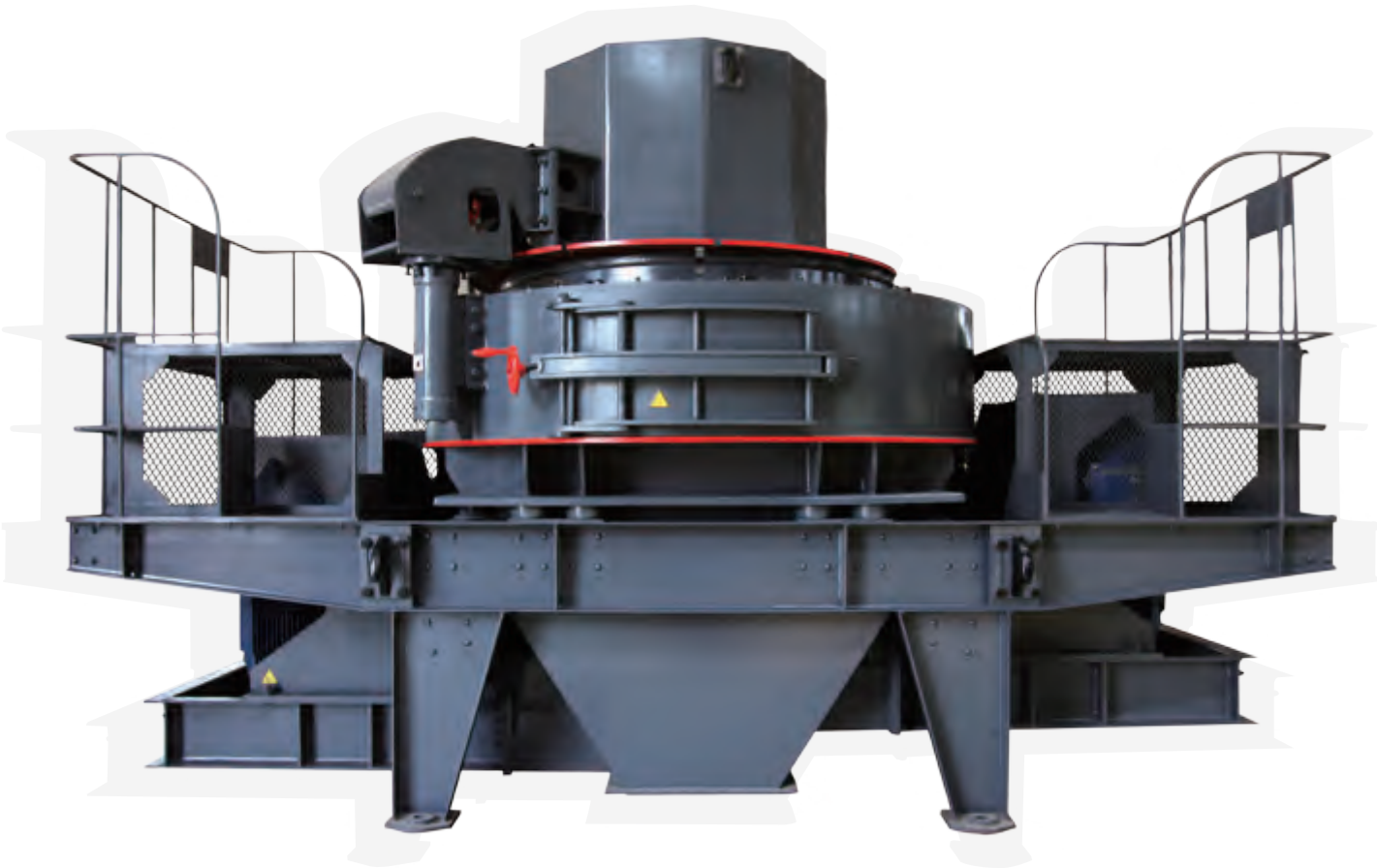
VSI Series Impact Crushers

VSI 系列冲击式破碎机是引进德国技术设计，结合国内的物料和需求情况设计的立轴冲击式破碎机，可以用于各种硬度的石料制砂和整形作业。

The VSI series impact crushers are vertical shaft impact crushers designed by introducing the German technology in accordance with the domestic materials and requirements, able to be used for sand-making and sizing operation of the stone materials different in hardness.

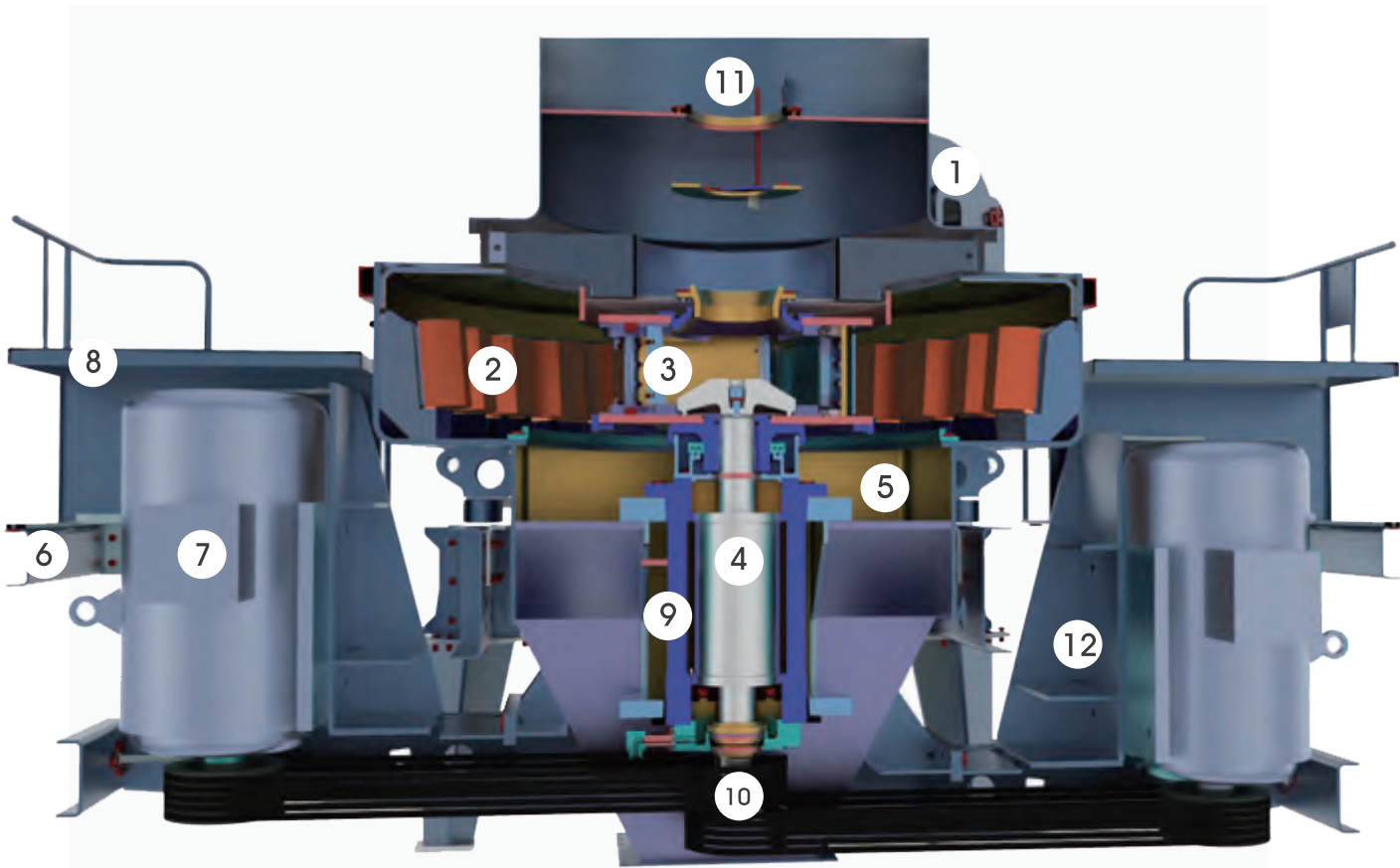
VSI 系列冲击式破碎机采用高速闭式叶轮对物料进行加速，可以根据用户情况配置石打铁或石打石、调节中心进料及瀑落料，以满足物料细碎及超细碎、机制砂加工和石料整形等不同的工艺需求。

The VSI series impact crushers adopt high-speed closed impellers to speed up materials, with stone against iron or stone against stone, central feeding adjustment and waterfall feeding available to configure according to users' conditions to meet the different process requirements, such as material fine and super-fine crushing, machine-made sand processing and stone sizing.



主要结构

Main Components



- 1. 顶盖回旋装置 Copping hydraulic
- 2. 周护板 Impact plate
- 3. 转子 Rotor
- 4. 传动轴 Transmission shaft
- 5. 机架 Frame
- 6. 支架 Bracket

- 7. 电机 Motor
- 8. 踏板架 Pedal bracket
- 9. 轴承筒 Bearing cylinder
- 10. 皮带轮 Pulley
- 11. 料斗 Hopper
- 12. 电机座 Motor bracket

参数

Specification

产品系列 Series of products	型号 Model	性能参数 Specification						外形尺寸 Overall dimension				功能结构 Structure and function			设备配置 Configure	
		最大进料粒度 Maximum feeding size(mm)	制砂处理能力 Maximum feeding size(t/h)	整形处理能力 Maximum feeding size(t/h)	转速 Speed (r/min)	功率 Power (KW)		设备长度 Device length (mm)	设备宽度 Device Width (mm)	设备高度 Device Height (mm)	转子结构 Structure of rotor	破碎腔型 Crushing cavity	溢料功能 Material overflow function	传动方式 equipment installation	润滑配置 Lubrication configuration	吊装悬臂 Protection cover
VSI6X系列 VSI6X Series	VSI6X8015	制砂≤30	整形≤40	109-117	131-140	1300-1700	75×2	4100	2300	2750	四口深腔转子 Four-port deep-cavity rotor	石打石/石打铁 Rock on rock Rock on iron	可四周溢料 Circumferential overflow	双电机驱动 Dual motor drive	自动稀油润滑 Automated dilute-oil lubrication	标准配置 Standard
	VSI6X9026	制砂≤35	整形≤45	167-179	200-215	1200-1500	132×2	4640	2380	3500						
	VSI6X1040	制砂≤40	整形≤50	264-283	317-342	1100-1400	200×2	4880	2560	3725						
	VSI6X1150	制砂≤45	整形≤55	344-368	413-442	1000-1300	250×2	5500	2750	3950						
	VSI6X1263	制砂≤50	整形≤60	454-486	545-583	900-1200	315×2	5700	2980	4190						
VSI5X系列 VSI5X Series	VSI5X7615	软料≤30	硬料≤30	70-140	150-280 (含溢料)	1700-1900	75×2	4100	2330	2300	三口深腔转子 Three-port deep-cavity rotor	石打铁/石打石 Rock on iron Rock on rock	可四周溢料 Circumferential overflow	双电机驱动 Dual motor drive	自动稀油润滑 Automated dilute-oil lubrication	不配置 Not configured
	VSI5X8522	软料≤35	硬料≤35	120-190	240-380 (含溢料)	1500-1700	110×2	4140	2500	2700						
	VSI5X953	软料≤40	硬料≤40	180-280	350-540 (含溢料)	1300-1510	160×2	4560	2600	2900						
	VSI5X1145	软料≤45	硬料≤45	250-360	500-640 (含溢料)	1100-1310	220×2	5000	2790	3320						
VSI系列 VSI6X Series	VSI7611	软料≤30	硬料≤30	60-90	120-180 (含溢料)	1700-1890	55×2	4100	2250	2258	三口转子 Three-port rotor	石打铁/石打石 Rock on iron Rock on rock	可四周溢料 Circumferential overflow	双电机驱动 Dual motor drive	自动稀油润滑 Automated dilute-oil lubrication	不配置 Not configured
	VSI8518	软料≤35	硬料≤40	100-130	200-260 (含溢料)	1520-1690	90×2	4140	2280	2425						
	VSI9526	软料≤40	硬料≤45	150-190	300-380 (含溢料)	1360-1510	132×2	4560	2450	2780						
	VSI1140	软料≤45	硬料≤50	225-260	450-520 (含溢料)	1180-1310	200×2	5100	2690	3200						



VSI6X系列冲击式破碎机生产现场

VSI6X Series vertical Shaft Impact Crusher production field



VSI5X系列冲击式破碎机生产现场
VSI5X Series Impact Crushers production field



VSI系列冲击式破碎机生产现场

VSI Series Impact Crushers production field