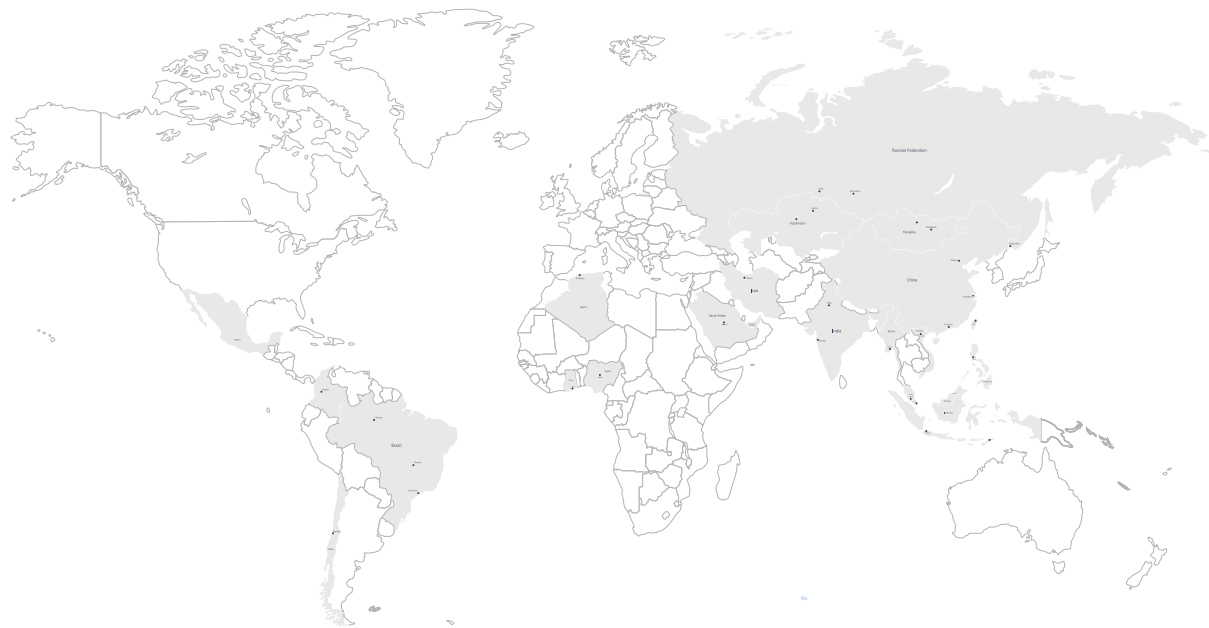


/ Z E N I T H I N T H E W O R L D /



NO.416 Jianye road, South Jinqiao Area, Pudong New
Area, Shanghai, China

E-mail
info@zenithcrusher.com

Tel
0086-21-583862 / 58386258

Web
www.zenithmills.com



【中英V2P3-1811】



MTM
系列中速梯形磨
Series Medium Speed
Trapezium Mill

上海西芝矿山工程机械有限公司
Shanghai Zenith Minerals Co., Ltd.

MTM系列中速梯形磨

MTM Series Medium speed Trapezium Mill

产品简介

Brlef Introduction

MTM 中速梯形磨粉机是西芝公司研发部多位工程技术专家在多年研发工业磨粉机的基础上，引进世界先进磨粉机的制粉技术，综合国内外制粉行业的先进经验，并结合数百家磨粉用户的使用建议下，精心设计开发出的一种具有国际先进技术水平的中国专利磨粉设备。

该机磨辊采用柔性连接、磨辊联动增压等多项专利技术，完全克服了传统工业磨粉机的产量低，能耗高，粉尘过大，环保不达标使用寿命短等缺陷，是替代传统磨粉机的理想设备。

MTM Medium Speed Trapezium Mill is a leading-world—level industrial mill. It is designed by our own engineers and technical workers, basing on industrial mill research of many years and adopting world—leading—powder processing technology. Our machine adopts many advantages from numbers of mill all over the world, such as flexible connection, roll linked pressure boost, etc. It has overcome the traditional mills defect completely in application, capacity, fineness, energy consumption, service life, etc.

And it is the ideal substitute of the traditional mill, such as Raymond mill, high pressure suspension mill, ball mill, etc. Nowadays, our products have been widely used in metallurgy industry, electric power industrial, chemical, building, steel industry, coal industry, etc. And it has brought large economic benefits to our customers and the society.



技术优势 / *Technical Advantages*

1、高效率的磨辊、磨环设计：磨辊和磨环设计上大小不同直径的阶梯形状，降低了物料在磨辊和磨环速度，延长了对物料的碾压时间，增加了成粉比例，提高了磨粉效率。

1.High efficient design of roller and ring: the roller and ring are in trapezium type of different diameter (upper side is bigger than lower side), this design can reduce material drop speed, extend the grinding time, so the power forming percentage and grinding efficiency are increased.

2、平衡增压弹簧设计：将对称的磨辊总成，用水平放置弹簧通过拉杆联接在一起，当入料过大顶摆一个磨辊总成时，其径向力可通过弹簧拉杆传给对称的磨辊总成来平衡。

2.Pressure-adding spring design: symmetrically, the roller assembly is connected by horizontal spring through rod, when material pass the assembly, the radial force can pass to symmetrical assembly through spring rod to keep balance.

3、平稳减振设计：将磨机主体部分与主机上部的分析机部分，采用减振弹簧联结，再用柔性带密封，因而减少了振动和噪音，也避免了共振。

3.Smooth vibration reduce design: the main unit and upper side classifier are connected by spring, and sealed with soft belt, which reduce the noise, sympathetic vibration is also avoided.

4、高精度选粉机叶轮设计：在转速不变的情况下，提高叶片的密度可提高成品细度，换言之，在产品细度不需要改变时，高密度叶轮比低密度叶轮转速低，因此减小了气流阻力，增加了生产能力，提高了生产效率。

4.High density design of vanes: the higher vane density, the more fineness of final product. That is, same fineness, the vane rotation speed of high density is slower than low density, which means the air resistance is smaller, so the capacity and efficiency are increased.



5、方便快捷的叶轮调整设计：选粉机叶片端部与壳体的间隙大小直接影响成品的细度方便快捷的叶轮调节是该磨机的专利技术之一。

5.Convenient vane adjust design: gap between vane end and shell are the main factor of product fineness, this is one patent of this mill.

6、高效节能、风机设计：该风机叶轮与叶片均采用模具冲压成型比传统的老式风机效率提高25%以上，是目前最为先进的高效节能离心式风机。

6.High efficiency blower design: this mill is equipped with most advanced centrifugal blower, whose efficiency is 25% higher than traditional blower.

7、除以上优点外，MTM190大型梯形磨粉机采用了世界独一无二的自动循环稀油润滑系统，在磨辊转动过程中，利用螺杆油泵的原理，将油送到上部轴承内，再加上四种不同类型的密封组合，比传统的密封形势效果提高数倍，有效延长了轴承的使用寿命。除尘采用集箱式脉冲除尘器，该除尘器收尘效过好，自动化程度高，环保效果更佳。成套设备我们采用了最新型的系统布置方案，该方案不仅节省占地空间，而且最大化的降低了系统内流动气体的能量消耗为提高经济效益奠定了良好的基础。

7.Besides, our MTM190 adopts unique automatic circulate thin oil lubrication system, when roller rotates, the oil is sent to upper bearing due to screw pump theory. And with four different types of seal combination, the seal effect much more efficient than traditional seal, the lifetime of bearing is thus prolonged. Box pulse duster is introduced, it is better than other duster in automatization and environmental protection effect. We also introduce newest system collocation scheme in the whole set equipment, this scheme not only save the space, but also decrease energy consumption of flowing air in system. Good basis is established to achieve higher economic benefit.

MTM磨粉机适用范围

Applicable Scope

该机可广泛适用于建材、化工、冶金、矿山、磨料、耐材、陶瓷、钢铁、电力、煤炭等行业物料的加工。可粉磨石英、长石、方解石、滑石、重晶石、萤石、稀土、大理石、陶瓷、铝矾土、锰矿、铁矿、铜矿、磷矿石、氧化铁红、铅英砂、矿渣、水渣、水泥生料、活性炭、白云石、花岗岩、石榴子石、氧化铁黄、豆饼、化肥、复合肥、粉煤灰、烟煤、焦煤、褐煤、菱镁砂、氧化铬绿、金矿、红泥、粘土、高岭土、焦炭、煤矸石、瓷土、蓝晶石、氟石、膨润土、麦饭石、流纹石、浑绿岩、叶蜡石、页岩、紫砂石、迭岩石、玄武岩、石膏、石墨、碳化硅、保温材料等莫氏硬度在9.3级以下，湿度在6%以下的各种非易燃易爆矿产物料。

超压梯形磨粉机在设计之初充分考虑脱硫制粉的需要，更可与脱硫设备完美匹配，从而提高脱硫效率，因此成为了国内外脱硫制粉的首选设备。

This series pulveriser is applicable to powder pulverization in metallurgy, building material, chemicals mine and other industries, can pulverize quartz, feldspar, calcite, talcum, barite, fluorite, rare earth, marble, ceramic, bauxite, manganese ore, iron ore, copper ore, phosphorus ore, ferric oxide rouge, zircon sand, slag, grain slag, clinker, compound fertilizer, coal ash, coking coal, brown coal, magnesite, chromium sesquioxide, golden ore, clay, kaolin, coke, coal gangue, porcelain clay, cyanite, fluorspar, bentonite, medical stone, flow mark stone, mixed green rock, pyrophyllite, cleaving stone, purple stone, dolomite, granite, basalt, gypsum, graphite, carborundum, heat insulating material and all kinds of non-flammability and non-explosion minerals with Moths hardness below Class 9.3 and humidity below 6%.

At the beginning of design for the overpressure trapezoidal pulveriser, full consideration on desulphurization and pulverization was made, thus the pulveriser is able to perfect match with the desulphurization equipment, so as to improve desulphurization efficiency. It becomes the first choice for desulphurization and pulverization at home and abroad.



技术支持

Technical Support

西芝公司可根据不同用户的实际需求提供不同的设备配置及方案设计，并可为有特殊要求的客户提供最合适的技术服务及技术培训。西芝公司最合理的售前方案设计和设备选型及最完善的售中支持和售后服务，为每位客户解除后顾之忧。使西芝公司磨粉设备的每一位用户都能在磨粉行业中取得更大的经济效益和市场效应，在巨大的市场竞争中更具竞争力。

Our experienced personnel understand the challenges mineral processing can present. Shanghai Zenith MTM Medium Speed Trapezium Mill provides the equipment and product supports services necessary to maximize the return on your grinding equipment investment. If your process requires grinding, Shanghai Zenith MTM Medium Speed Trapezium Mill can serve your needs. We are the world's leading supplier of grinding mills. Our vision is to be recognized worldwide by the industries we serve as a supplier of superior quality products and services with on time delivery and unmatched value.



旋风集粉器
Whirlwind powder collector

料仓 / Hopper

斗式提升机 / Bucket elevator

颚破 / Jaw crusher

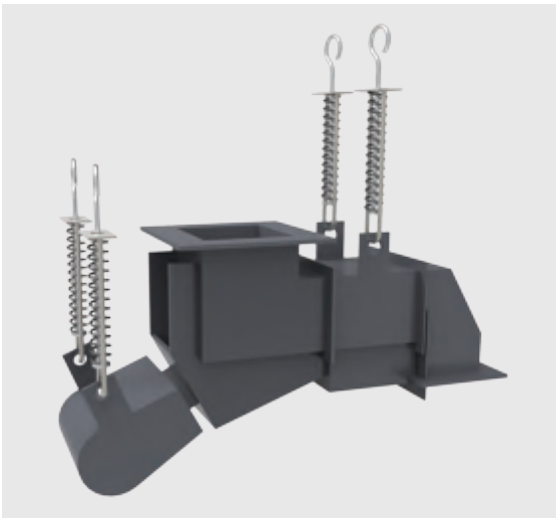
布袋除尘器
Bag-type dust collector

分析机 / Classifier

风机 / Blower

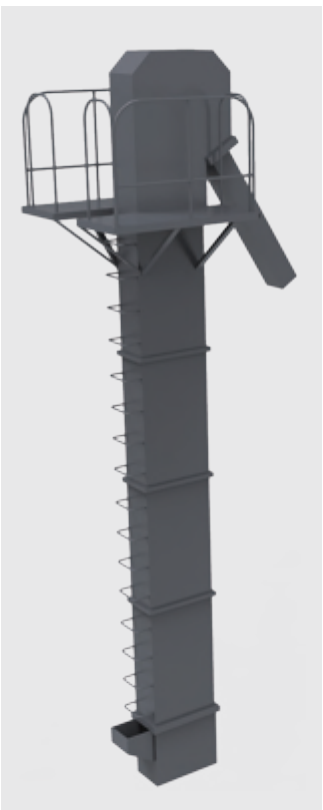
主机 / Main unit

电磁振动给料机
Electro-vibrating feeder



旋风集粉器
Whirlwind powder collector

斗式提升机
Bucket elevator



技术参数表 / *Specification Chart*

参数 Technical parameters	产品 Product	MTM100	MTM130	MTM160
名称 Name				
环辊数量 Number of roller(piece)		4	5	6
磨辊大径X高度 Major diameter of roller x Height(mm)		Φ310X170	Φ410X210	Φ480X270
主机转速 Main unit spindle speed(r/min)		130	103	82
最大进料粒度 Feeding size(mm)		<25	<30	<35
成品粒度 Grain size of finished product(mm)		1.6-0.045 minimum 0.038	1.6-0.045 minimum 0.038	1.6-0.045 minimum 0.038
产量 Output(t/h)		3-8	6-11	9-22
外形尺寸 Overall dimension(mm)		7100X5900X7900	9200X7250X9700	12300X7126X9500

注:表中产量指粉磨石灰石,成品细度80-200目,通筛率为80%.空气湿度低于60%。各项参数及外形若有变更,恕不另行通知。
Note: The output in the form refers to grind limestone to 80% pass 200 meshes. Air humidity less than60 % . Any change of technical data shall not be advised additionally.

名称 Name	项目 Item	单位 Unit	规格、技术数据 Specification and technical data		
			MTM100	MTM130	MTM160
主机电动机 Motor of Main unit	型号 Model		Y225S-4	Y280S-4	Y315M-4
	功率 Power	千瓦 kw	37	75	132
	转速 Speed	转/分 r/min	1480	1480	1480
选粉机调速电动机 Motor of Classifier	型号 Model		YCT200-4A	YCT200-4B	YCT250-4A
	功率 Power	千瓦 kw	5.5	7.5	18.5
	转速 Speed	转/分 r/min	125-1250	125-1250	132-1320
提升机电动机 Motor of elevator	型号 Model		Y100L2-4	Y100L2-4	Y112M-4
	功率 Power	千瓦 kw	3	3	4
	转速 Speed	转/分 r/min	1430	1430	1440
风机电动机 Motor of blower	型号 Model		Y225S-4	Y280S-4	Y315M-4-132/Y315L1-4-160
	功率 Power	千瓦 kw	37	75	132/160
	转速 Speed	转/分 r/min	1480	1480	1480
颚破电动机 Motor of jaw crusher	型号 Model	PE	200X350	250X400	250X750
			Y160M-6	Y180L-6	Y200L2-6
	功率 Power	千瓦 kw	7.5	15	22
电磁振动给料机 Magnetic vibration feeder	型号 Model		GZ2F	GZ3F	GZ3F
	功率 Power	千瓦 kw	0.15	0.2	0.2

注:各项参数及外形若有变更,恕不另行通知。Note: Any change of technical data shall not be advised additionally.

