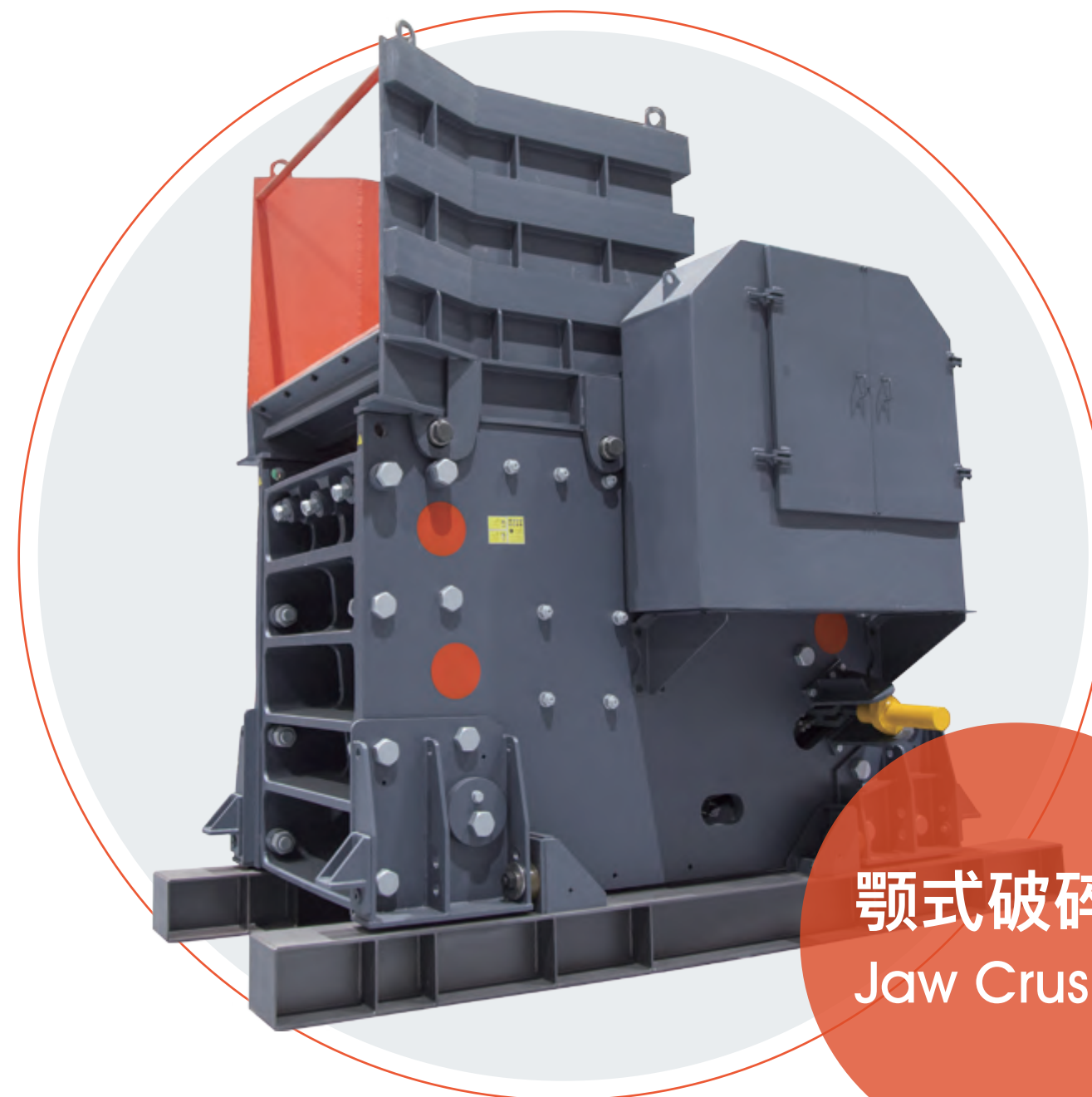


/ Z E N I T H I N T H E W O R L D /



**颚式破碎机**  
**Jaw Crusher**

NO.416 Jianye road, South Jinqiao Area, Pudong New  
Area, Shanghai, China

E-mail  
[info@zenithcrusher.com](mailto:info@zenithcrusher.com)

Tel  
0086-21-58386256/58386258

Web  
[www.zenithcrusher.com](http://www.zenithcrusher.com)



【中英V1P1-1811】

# C6X系列颚式破碎机

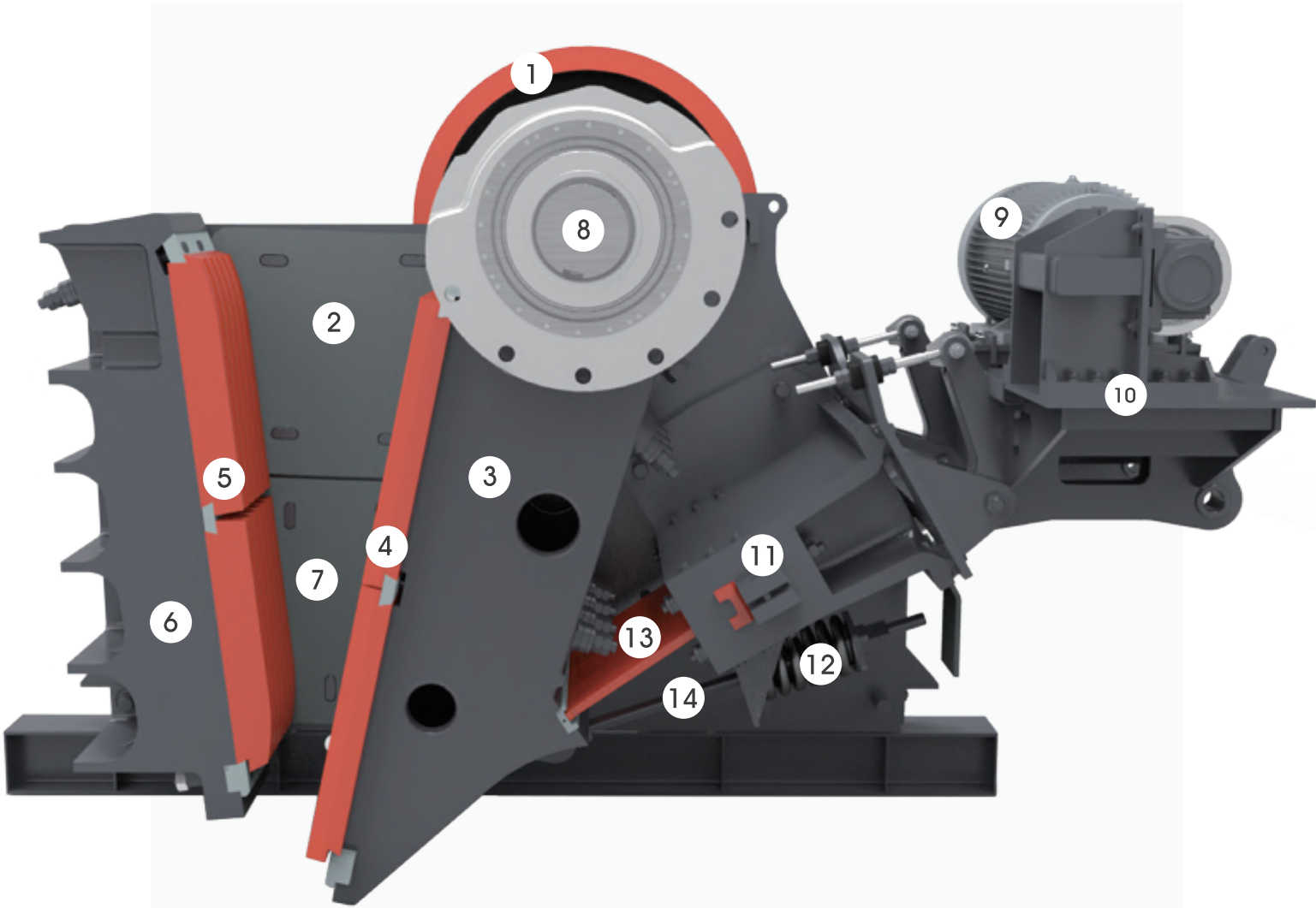
## C6X Series Jaw Crusher

当破碎高硬度、强腐蚀性物料时，C6X 系列颚式破碎机仍然可以十分高效出色的完成任务。其设备结构、制造工艺及材料选择决定了其机身的高强度、应用的广泛性，不仅可以用于最坚硬的岩石和矿石的粗碎作业，还可以在地面和井下最苛刻的生产环境下连续生产，确保客户生产效能的最大化。

When crushing such materials high in hardness and strong in corrosion, C6X series jaw crusher still can complete the task efficiently and excellently. The equipment structure, manufacturing process and material selection has determined the bodywork high strength and its universality application, so the equipment can not only be applicable to coarse crushing of the hardest rocks and ores, but also can manage continuous production in the most stringent production environment underground to maximize customers' production efficiency.

### 主要结构

### Main Components



- 1. 飞轮 Flywheel
- 2. 上边护板 Upper Lining Plate
- 3. 动颚 Movable Jaw
- 4. 活动颚板 Movable Jaw Plate
- 5. 固定颚板 Fixed Jaw Plate
- 6. 机架 Frame
- 7. 下边护板 Lower Lining Plate

- 8. 偏心轴 Eccentric Shaft
- 9. 电机 Motor
- 10. 电机座 Motor Bracket
- 11. 调整座 Adjustment Device
- 12. 弹簧 Spring
- 13. 肘板 Toggle Plate
- 14. 拉杆 Tension Rod



## 精益设计 获得更高性能

### Lean design - Get better performance

C6X 系列颚式破碎机腔型是在反复的计算和实践应用的基础上优化设计的，设备运动学性能更高，V 型破碎腔增大了实际进料尺寸。配合大冲程、陡肘板倾角设计，使破碎腔最底部的冲程更大，物料吞吐能力更强，大大提高了破碎效率。

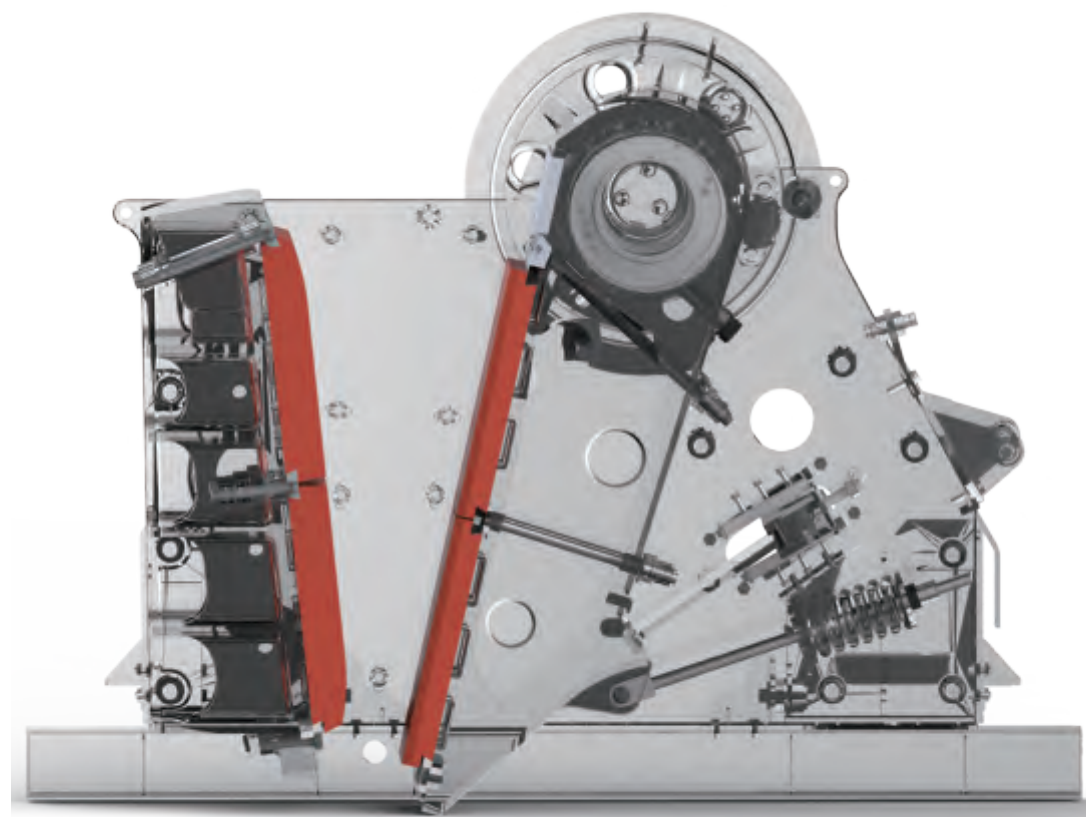
The cavity type of C6X series jaw crusher is optimized and designed on the basis of repeated calculation and practical applications, able to achieve higher kinematic performance; The V shape cavity improved the real feeding size. Moreover, its large stroke and steep bracket angle design can realize a greater stroke at the bottom of the crushing cavity, achieve stronger material throughput and thus greatly improve the crushing efficiency.

## 高效腔型 破碎效率高

### Efficient cavity type – Higher crushing efficiency

C6X 系列颚式破碎机腔型是在反复的计算和实践应用的基础上优化设计的，设备运动学性能更高，配合大冲程、陡肘板倾角设计，使破碎腔最底部的冲程更大，物料吞吐能力更强，大大提高了破碎效率。

The cavity type of C6X series jaw crusher is optimized and designed on the basis of repeated calculation and practical applications, able to achieve higher kinematic performance; moreover, its large stroke and steep bracket angle design can realize a greater stroke at the bottom of the crushing cavity, achieve stronger material throughput and thus greatly improve the crushing efficiency.

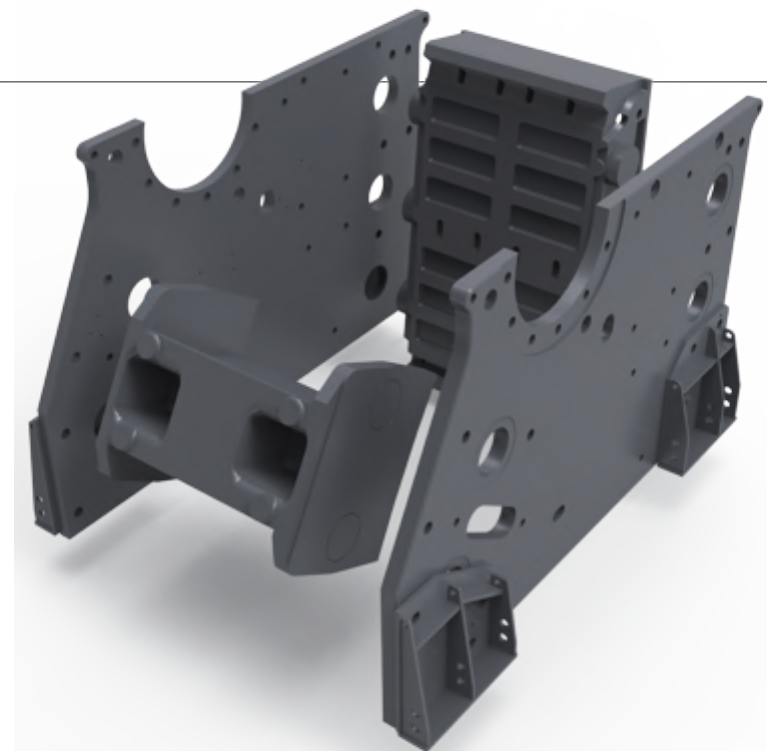


## 可拆分机架 强度更高

### Detachable frame - Higher strength

C6X 系列颚式破碎机采用侧板、前后机架分离设计，侧板采用两块热轧钢板，调整座和前机架采用高强度铸钢，通过螺栓和销轴固定。避免了因焊接带来的应力集中问题，同时机架可以拆分，方便安装运输及维护。

C6X series jaw crusher adopts the design that the side plates are separated from the front and rear frames, the side plates use two hot rolled steel plates, the adjusting bearer as well as the front and rear frames adopt high-strength cast steel and are bolted with the pin shaft, which has avoided the stress concentration during welding; at the same time, the detached frames can facilitate installation, transportation and maintenance.



## 高品质铸锻 确保设备可靠性能

### High quality casting - To ensure reliable performance

为了确保设备在破碎坚硬物料时能够高效率作业，C6X 系列颚式破碎机的核心转动部件如高质量铸造动颚体、大偏心距重型锻造偏心轴、高转动惯量的铸造飞轮和高强度整体铸钢轴承盒，强劲的动力配合合理设备转速，确保设备稳定高效率生产。

In order to ensure stable and efficient production of the equipment during crushing hard materials, C6X series jaw crusher is equipped with such core rotating components as high-quality casting movable jaw body, large-eccentric heavy-duty forged eccentric shaft, cast flywheel with a high moment of inertia and high-strength integrated cast steel bearing box, as well as strong power with reasonable speed configurations.

1、动颚采用高质量铸钢件整体铸造设计，且整体结构经过优化设计，确保设备在高频率破碎坚硬物料时的可靠性。

1. The movable jaw adopts the high-quality steel integral casting design, with the overall structure optimized during design to ensure the equipment reliability during high-frequency hard material crushing.



2、C6X 系列颚式破碎机主轴采用重型锻打偏心轴，配套四个大规格高品质轴承，使设备具有超强的承载能力。

2. The main shaft of the C6X series jaw crusher adopts a heavy-duty forged eccentric shaft supported by four large-sized high-quality bearings, able to have the equipment achieve super-strong bearing capacity.



3、机架轴承盒采用整体铸造设计，轴承盒和机架准确配合通过螺栓固定，避免分离式轴承盒对轴承产生的不良受力影响，提高轴承的可靠性。

3. The frame bearing box adopts an integral casting design with the bearing box and frames fitting accurately and firmly by bolts to avoid adverse stress impact of the detachable bearing box on bearings and thus improve the bearing reliability.



4、设备飞轮和带轮采用星型布筋高转动惯量设计，整体铸造而成，强度高，可以储存更大的能量，为破碎作业提供更强劲的动力。

4. The equipment flywheel and pulleys adopt a star-reinforced high inertia moment design subject to overall casting featuring high strength, able to store more energy and thus provide stronger power for crushing operation.



## 国际化高标准配置

### International top configurations

高品质的原材料及可靠性设计为 C6X 系列颚式破碎机破碎超硬物料提供了足够的设备强度和耐久性能，并降低了维修成本。

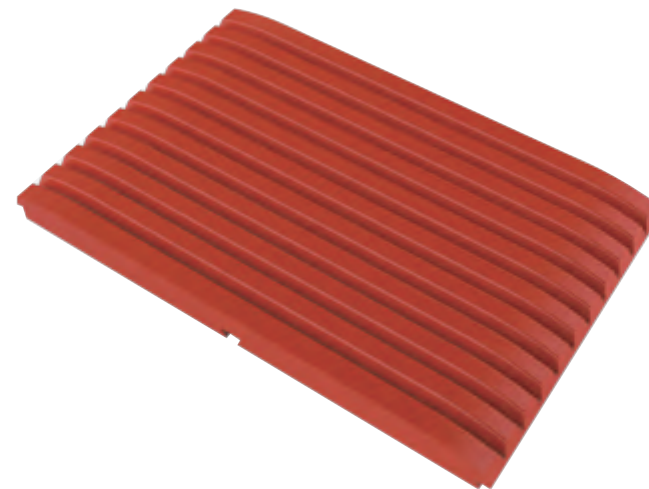
High-quality raw materials and reliable design can provide sufficient equipment strength and remarkable durability for C6X series jaw crusher during superhard material crushing and thus reduce the maintenance costs.

### 更好的选材 只为更强的质量

#### Better raw materials - For better quality only

选用更好的原材料和铸锻件，C6X 系列颚式破碎机在关键部件上均选用国内外更好的材料，如侧板、前后墙、动颚体、主轴等。

Better raw materials, castings and forgings - C6X series jaw crusher selected better materials both at home and abroad for such key components as side plates, front and back walls, movable jaw body and shaft.

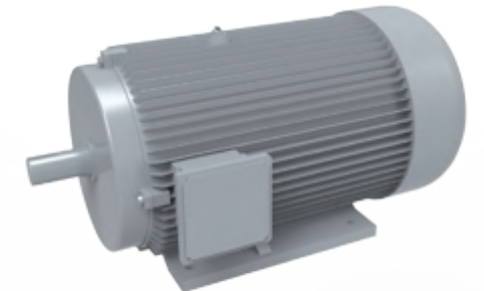


## 联合国内外顶级品牌供应商

### Join hands with top brand suppliers at home and abroad

选用国内外知名品牌配套件，如轴承、电机等，均可根据用户需求选用国内和国外知名品牌产品，品质保障，满足用户对不同配置的需求。

Choose well-known brand accessories at home and abroad, such as bearings and motors, according to users' requirements, so the quality can be more sufficiently guaranteed to meet users' demand for different configurations.



### 多种可选配置 扩大用户选择范围

#### Rich optional configurations - For users' wider options

设备提供多种配置供用户选择，除了为用户提供多种颚板形式、国内外顶级品牌轴承和电机供选择，用户还可以根据需求选择皮带轮和飞轮防护罩，以及颚破入料料斗。

The equipment offers a variety of configurations for users, including various jaw plate forms and domestic or foreign top brand bearings and motors as well as belt pulleys, flywheel housing and jaw crusher feed hoppers according to users' demands.





## 安装快捷 快速投入生产

Fast installation, quick production

### 一体化设计 节约安装空间

Integrated design, smaller installation space

C6X 系列颚式破碎机采用一体化的电机座设计，电机座直接固定在破碎机上，无需制作电机基础，减少了安装空间的同时动力传输更加稳定。

The C6X series jaw crusher adopts an integrated motor base design with the base fixed directly on the crusher subject to no base fabrication in advance, which has reduced the installation space and simultaneously achieve more stable power transmission.

### 弹性减震固定 降低设备冲击力

Elastic damping anchors, able to decrease the equipment impact

采用弹性限位块和橡胶减震装置替代刚性地脚联接，有效的吸收震动峰值载荷，从而降低了破碎机与基础之间的相互冲击，提高破碎机使用寿命。

Elastic stop blocks and rubber shock absorbers are used to replace the rigid anchors, able to effectively absorb the vibration peak load, reduce the mutual impact between the crusher and the foundation, and thus improve the service life of the crusher.

### 固定式或移动式作业灵活切换

Flexible switching between fixed and mobile operations

C6X 系列颚式破碎机独特的分离式结构和免地脚安装形式，对设备基础要求更低，而且每个主要零部件都可以拆分开来，除了保证设备在地面固定生产线中稳定运行外，还可以用于移动式生产线以及井下作业，大大扩展了设备的作业范围。

The C6X series jaw crusher has a lower requirement for the equipment foundation by virtue of its unique detachable structure and anchor-free installation and each main component can be detached, so it can not only ensure stable operation of the equipment in ground-fixed production lines, but also be applicable to mobile production lines and borehole operations, which has greatly expanded the operation scope of the equipment.

## 易于维护 提高设备作业率

Easy maintenance, able to improve the equipment operation efficiency

C6X 系列颚式破碎机适应于恶劣的生产环境，然而再好的设备也需要合理的检修和维护，合理的检修和维护不但可以保证设备的正常运行，还能够增强其工作效率，提高系统生产能力；C6X 系列颚式破碎机的设计考虑到了设备在检修和维护的各个细节，旨在减少设备维护停机时间，提高设备作业率，降低用户维护成本。

The C6X series of jaw crusher is suitable for harsh production environment, but any equipment also needs reasonable repair and maintenance no matter how excellent it is and reasonable repair and maintenance can not only ensure the equipment normal operation, but also can enhance the work efficiency and improve the system production capacity; the design of C6X series jaw crusher has considered all details of the equipment in repair and maintenance in order to reduce the downtime due to equipment maintenance, improve the equipment operation efficiency and reduce users' maintenance costs.

### 迷宫式密封

Labyrinth seal

C6X 系列颚式破碎机轴承采用迷宫式密封，确保轴承内部润滑油脂清洁，大大提高轴承的使用寿命。

The C6X series jaw crusher has used labyrinth seals for its bearings to ensure cleanness of the lubricating grease inside the bearings and greatly improve the bearing service life.

### 集中润滑

Centralized lubrication

设备采用油脂集中润滑，可以根据需要配置手动或自动油脂润滑系统，降低维护保养难度，同时最大限度的保证 C6X 系列颚式破碎机作业现场干净整洁。

The equipment adopts centralized grease lubrication and a manual or automatic grease lubrication system can be configured as needed, which can reduce the difficulty in maintenance and simultaneously guarantee cleanness and neatness at the work site of C6X series jaw crusher to the maximum extent.

### 灵活的调整方式

Flexible adjustment methods

C6X 系列颚式破碎机采用双楔块调整排料口，可以根据需要配备机械或液压方式调整，比传统垫板式排料口调整操作更简单、高效。

The C6X series jaw crusher uses a double-wedge regulating discharge port with the mechanical or hydraulic regulation available as needed, so it can be regulated more simply and efficiently than the traditional underboarding discharge ports.

# PEW系列颞式破碎机

## PEW Series Jaw Crusher

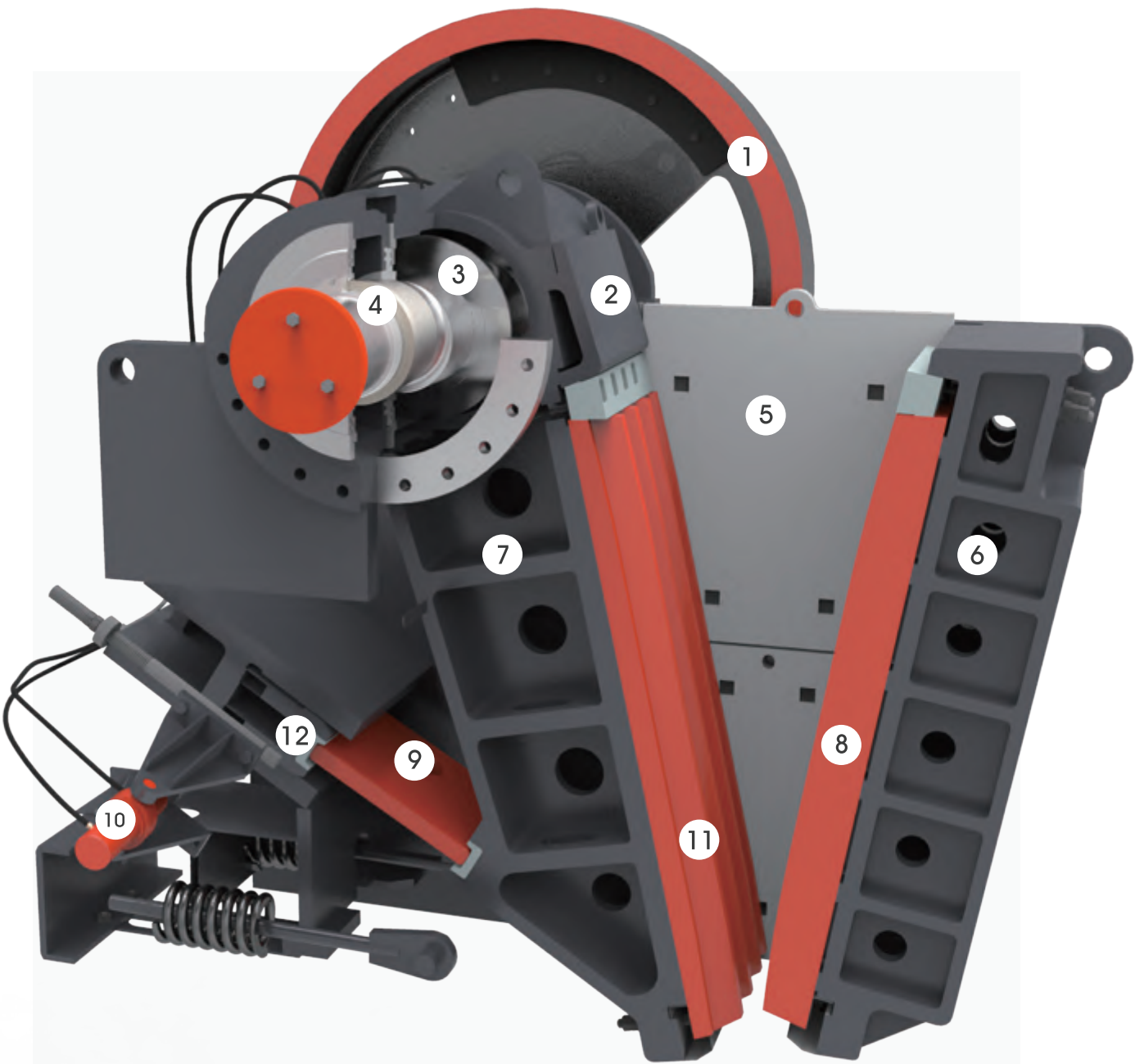
PEW 系列颞式破碎机是针对普通颞式破碎机性能差、笨重及操作复杂等缺点，结合国际先进的颞式破碎机技术开发的新型高性能液压调整颞式破碎机。

The PEW series jaw crushers are new high-efficiency hydraulic control jaw crushers developed on the basis of international advanced technology for jaw crusher free of such defects of the common jaw crushers as poor performance, cumbersomeness and complex operation.



### 主要结构

### Main Components



- 1. 带轮 Sheave
- 2. 动颞护板 Guard plate
- 3. 偏心轴轴承 Eccentric shaft bearing
- 4. 偏心轴 Eccentric shaft
- 5. 上边护板 Upper Lining Plate
- 6. 机架 Frame

- 7. 动颞体 Movable jaw assembly
- 8. 固定颞板 Fixed Jaw Plate
- 9. 肘板 Toggle plate
- 10. 液压调整系统 Hydraulic setting system
- 11. 活动颞板 Movable Jaw Plate
- 12. 调整座 Adjustment Device

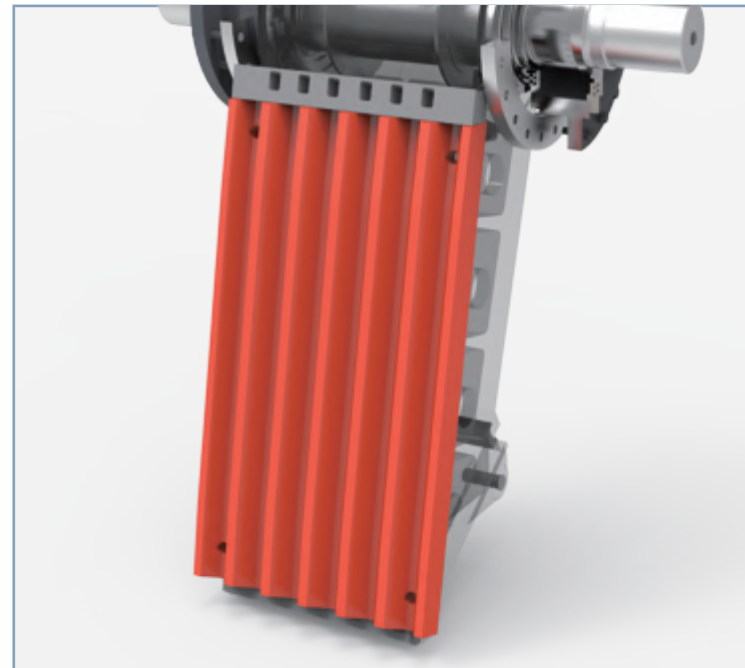


## 动颚总成经久耐用

### Durable moving jaw assembly

动颚总成采用高品质的铸钢制造而成, 并通过两个大型的铸钢调速轮驱动。重型的锻造偏心轴及 4 个同规格的球型滚动轴承确保其在最严苛的破碎条件下也具有超凡的可靠性。

The moving jaw assembly is made of high-quality cast steel and droved by two massive cast steel flywheels. Avery large eccentric shaft forging and four large spherical roller bearings that are all of the same size ensure the greatest reliability even under the most severe crushing conditions.

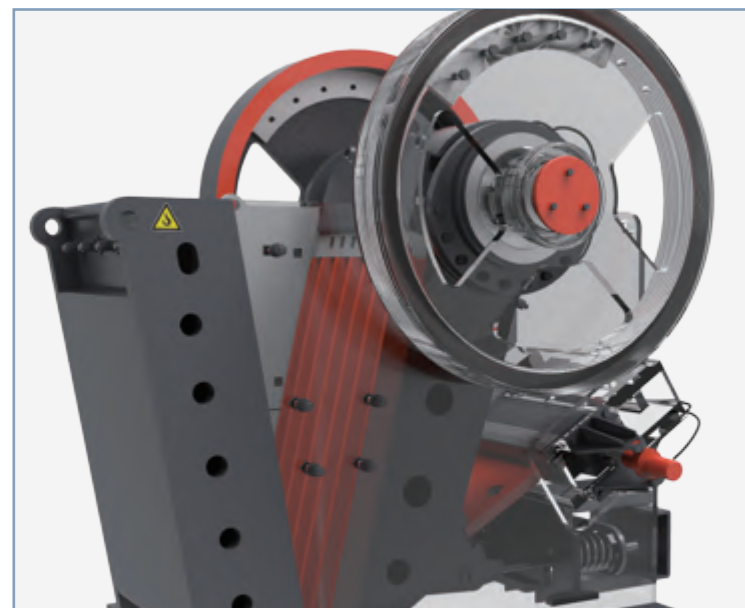


## 整体式铸钢轴承室

### Single piece cast steel frame bearing housings

整体式铸钢轴承室与机架的完美配合, 避免了两半式轴承室给机架带来的的不必要负荷。

The single piece cast steel frame bearing housings ensure a perfect fit to the crusher frame. They also prevent unnecessary loads to the frame bearings that are common with 2 — piece frame bearing housings.

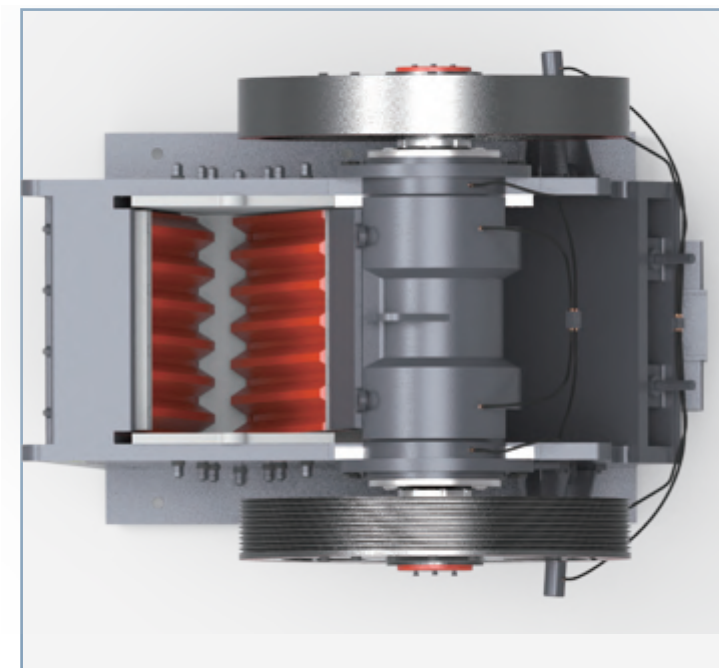


## 合适的腔型设计

### The right cavity design

合适的腔型设计可以有效的改善破碎机的工作性能。“V”型破碎腔保证了颚破的实际入料尺寸和理论入料尺寸一致, 这使得我们的 PEW 系列颚破的入料尺寸远远大于其它同规格颚破的入料尺寸。同时该腔型也保证了物料在破碎腔中不会发生堵料, 使得颚破的破碎率和产量最大化, 同时提高了颚板的利用率。

The right cavity design can improve the performance of the crusher greatly. The "V" type cavity makes sure the real feeding size of jaw crusher equal to the nominal one. The real feeding size of Zenith PEW series is greatly bigger than competitors' comparable size. And this right cavity design ensures that the materials progresses smoothly down though the crushing cavity to enable high reduction, productivity and superb utilization of jaw plates.

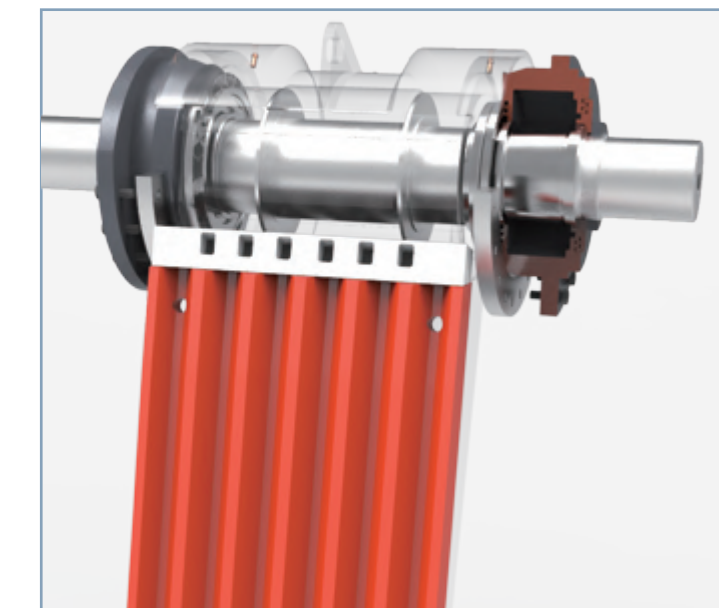


## 选用大型的轴承

### Selected larger eccentric shaft bearing

西芝的全部 PEW 系列颚破都配有比其它同规格颚破更大、更坚固的偏心轴轴承。迷宫式密封设计使其远离污染物的侵蚀。

All zenith PEW series jaw crushers incorporate larger and sturdier eccentric shaft bearing than competitors' comparable size. The grease-lubricated bearings are kept free from contamination by means of well — proven labyrinth seals.



# PE系列颞式破碎机

## PE Series Jaw Crusher

PE 系列颞式破碎机是在国内传统的复摆颞式破碎机技术基础上优化设计的, 结构简单, 性能可靠, 是目前国内外应用较早、应用较多的颞式破碎机。

The PE series jaw crushers optimized and designed on the basis of the domestic traditional compound pendulum jaw crusher technology feature reliable performance and a simple structure. It' s the earliest and most widely applied so far at home and abroad.

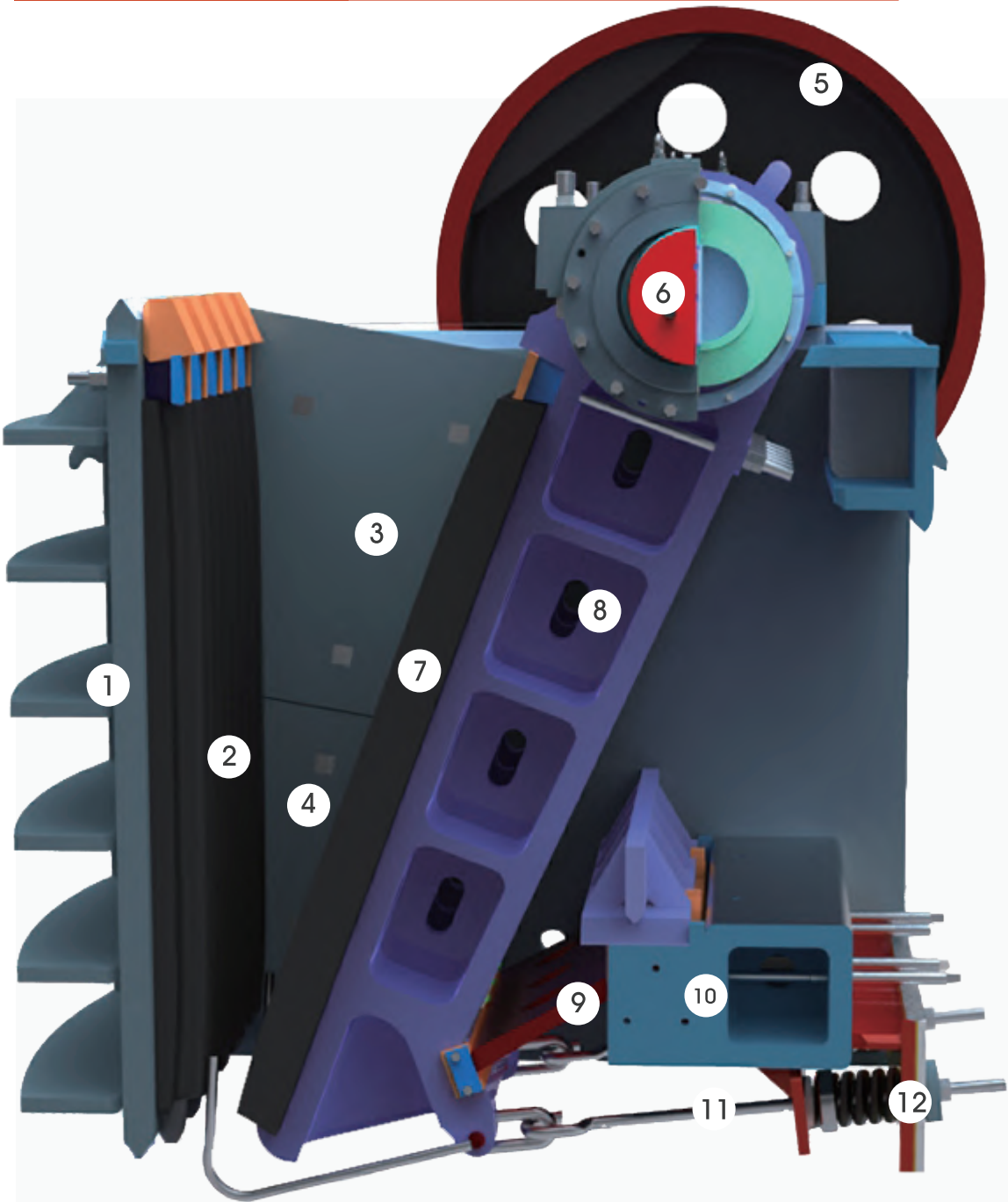
PE 系列颞式破碎机结构简单, 破碎腔采用深腔设计, 机架采用整体焊接技术, 动颞运动经过优化, 设备性能较传统颞式破碎机明显提升, 工作更加稳定可靠。

The PE series jaw crushers adopt a simple structure, a deep crushing cavity, an integrally welded frame and an optimized movement style of the movable jaw, so the equipment performance has been significantly improved over the traditional jaw crushers to achieve more stable and reliable operation.



## 主要结构

## Main Components



- |                            |                           |
|----------------------------|---------------------------|
| 1. 机架 Frame                | 7. 活动颞板 Movable Jaw Plate |
| 2. 固定颞板 Fixed Jaw Plate    | 8. 动颞 Movable Jaw         |
| 3. 上边护板 Upper Lining Plate | 9. 肘板 Toggle plate        |
| 4. 下边护板 Lower Lining Plate | 10. 调整座 Adjustment Device |
| 5. 飞轮 Flywheel             | 11. 拉杆 Tension Rod        |
| 6. 偏心轴 Eccentric Shift     | 12. 弹簧 Spring             |



参数

Specification

产品系列 Series of crusher	型号 Model	性能参数 Specification								外形尺寸 Overall dimension			功能结构 Structure and function				设备配置 Configure			
		进料口长度 Length of feed (mm)	进料口宽度 Width of feed (mm)	最大进料粒度 Maximum feeding size(mm)	出料口调整范围 Range of discharge opening(mm)	处理能力 Capacity (t/h)	转速 Speed (r/min)	功率 Power (Kw)		设备长度 Device length (mm)	设备宽度 Device Width (mm)	设备高度 Device Height (mm)	破碎腔型 Type of crushing cavity	设备调整 Equipmen tadjustment	电机安装 Motor installation	设备安装 equipment installation	润滑配置 Lubrication configuration	防护罩 Protection cover	进料斗 Feed hopper	
C6X系列 C6X Series	C6X80	800	520	420	60-150	80-290	350	75		2650	1540	1780	V型腔 V-typed cavity	液压双楔块调整 Adjustment of hydraulic double wedge	一体式安装 Integral installation	弹性减震固定 Fixation of elastic damper	全自动集中润滑 Fully automatic centralized lubrication	标准配置 Standard configure	标准配置 Standard configure	
	C6X100	1000	760	640	70-175	130-420	260	110		3700	2440	2520								
	C6X110	1100	850	720	80-200	160-550	230	160		3800	2450	2550								
	C6X125	1250	950	800	100-250	230-760	220	160		4100	2750	2780								
	C6X145	1450	1100	930	125-275	320-950	220	200		4400	3060	3210								
	C6X160	1600	1200	1020	150-300	410-1150	220	250		5700	3650	3550								
	C6X200	2000	1500	1280	175-300	610-1510	200	400		6500	3990	4260								
PEW系列 PEW Series	PEW250×1000	1000	250	220	20-40	15-50	330	30		1400	1850	1310	V型腔 V-typed cavity	机械双楔块调整 Adjustment of mechanical double wedge	分离式安装 Split-type installation	地脚螺栓固定 Fixation of foundation bolt	手动润滑 Manual lubrication	选配 Optional	选配 Optional	
	PEW250×1200	1200	250	220	20-40	20-50	330	37		1400	2050	1310					自动集中润滑 Automatic centralized lubrication			
	PEW400×600	600	400	350	35-85	15-70	250	37		1920	1460	1840								
	PEW760	1100	760	640	75-200	150-350	270	110		2600	2500	2200								
	PEW860	1100	860	720	100-225	200-500	240	132		3300	2320	3120								
	PEW1100	1200	1100	930	150-275	300-650	210	185		4140	2660	3560								
PE系列 PEW Series	PE600×900	900	600	500	65-160	70-120	250	75		2520	1840	2303	传统深腔 Traditional deep cavity	机械垫片调整 Adjustment of mechanical gaskets	分离式安装 Split-type installation	地脚螺栓固定 Fixation of foundation bolt	手动润滑 Manual lubrication	选配 Optional	选配 Optional	
	PE750×1060	1060	750	630	80-140	130-260	250	90		2620	2302	3110								
	PE900×1200	1200	900	750	95-165	220-380	200	130		3789	2826	3025								
	PE1000×1200	1200	1000	850	195-265	230-380	200	130		3889	2826	3025								
	PE1200×1500	1500	1200	1020	150-300	400-800	220	200		4930	3150	3700								





C6X系列颞式破碎机生产现场  
C6X Series Jaw Crusher production field





PEW系列颞式破碎机生产现场  
PEW Series Jaw Crusher production field





PE系列颞式破碎机生产现场

PE Series Jaw Crusher production field