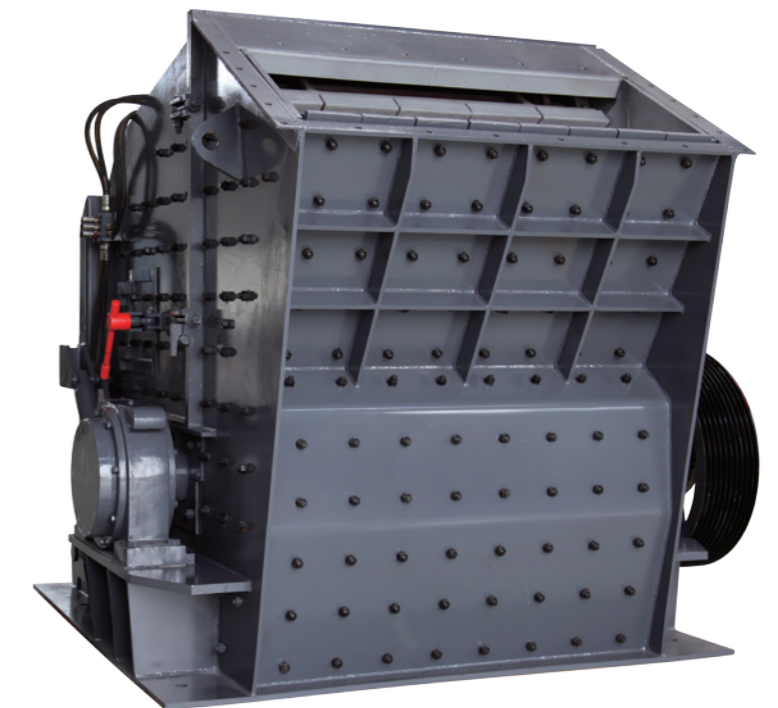


PFW Series Impact Crushers

PFW系列反击破



上海西芝矿山工程机械有限公司

地址：上海浦东新区金桥南区建业路416号

电话：021-58386256 58386258

传真：021-58385887

邮编：201201

网址：<http://www.zenithcrusher.com>

邮箱：info@zenithcrusher.com

Shanghai Zenith Mining and Construction Machinery Co., Ltd.

Add: No.416 Jianye Road, South Jinqiao Area, Pudong

New Area, Shanghai, China

Tel: 0086-21-58386256 58386258

Fax: 0086-21-58385887

Zip: 201201

[Http://www.zenithcrusher.com](http://www.zenithcrusher.com)

E-mail: info@zenithcrusher.com

PFW1214-Ⅱ

PFW1315-Ⅱ

PFW1318-Ⅱ

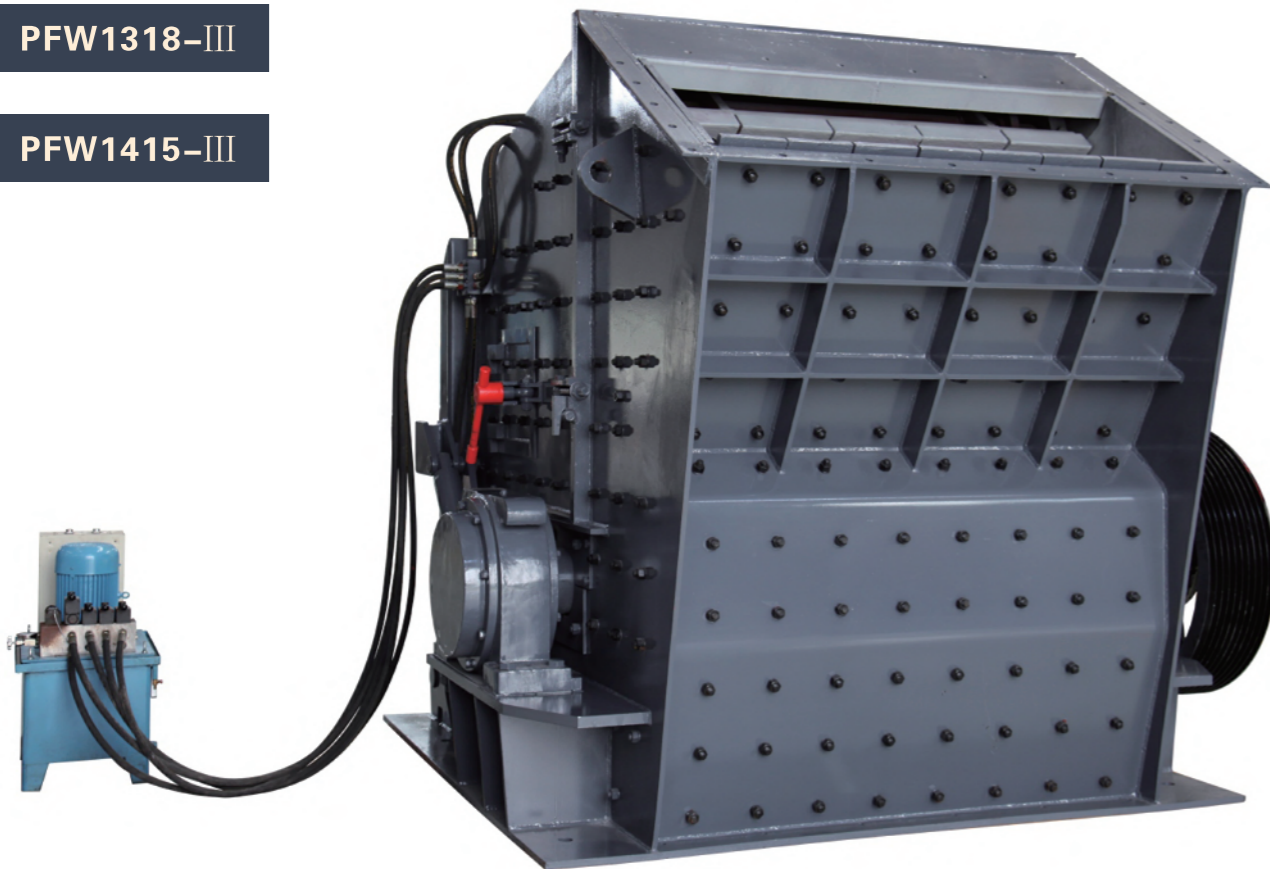
PFW1415-Ⅱ

PFW1214-Ⅲ

PFW1315-Ⅲ

PFW1318-Ⅲ

PFW1415-Ⅲ



PFW系列反击破

PFW series impact crushers

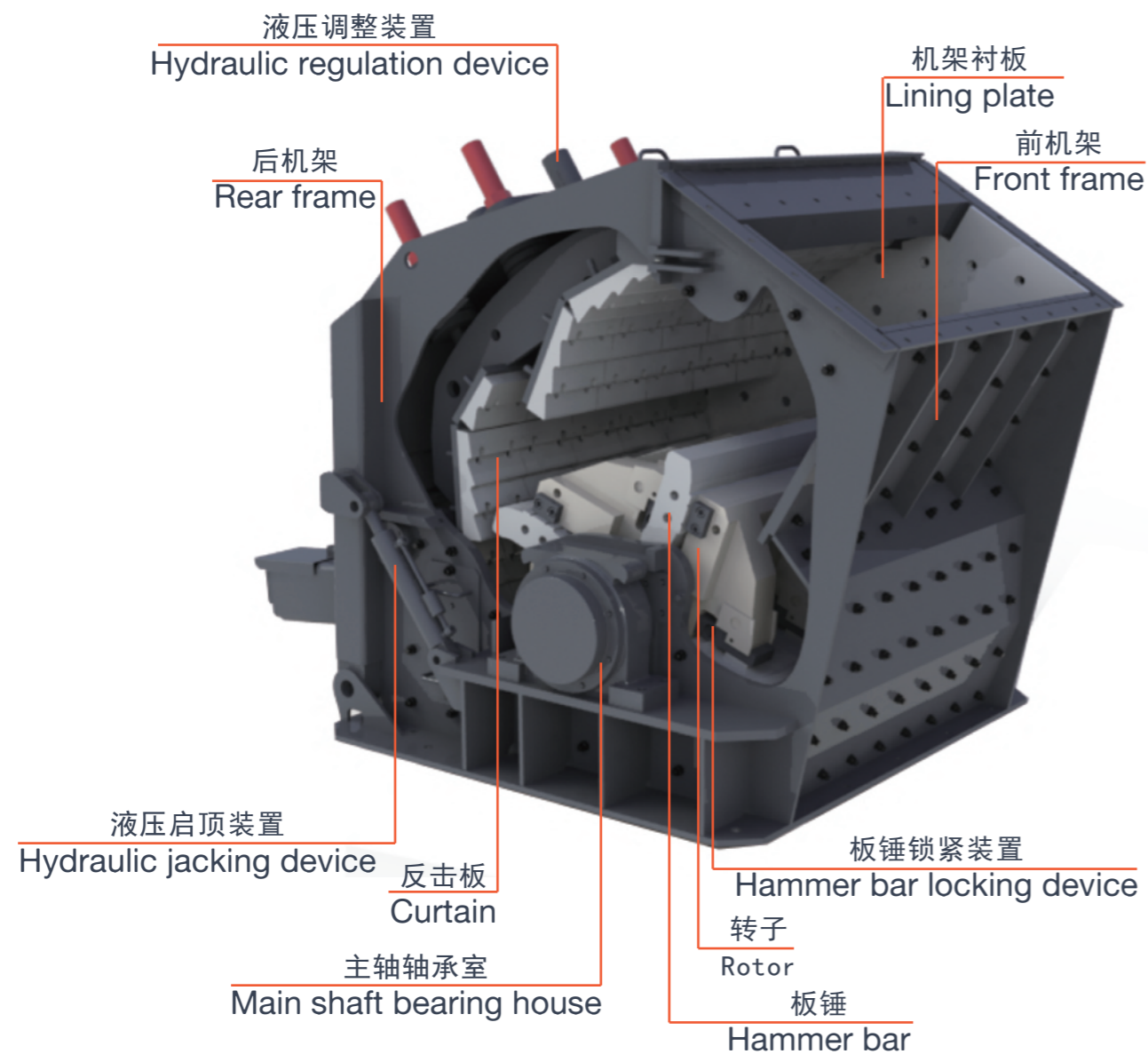
产品简介：

PFW系列反击破是我公司在研究、设计和制造PF系列反击破的20多年经验的基础上，开发的最新型反击式破碎机。该系列反击式破碎机具有重型转子设计、独特的板锤锁紧系统、衬板内部可替换、维修方便等特点。因此，该系列反击破给客户提供一种低成本的解决方案，性能突出，产品粒形好，单位运行成本低，适用物料范围广。

Product brief introduction:

PFW series impact crushers are the latest development of impact crusher based on zenith's more than 20 years experience and leading technology in PF impact crusher. PFW series impact crushers have the features of heavy duty rotor design, unique hammer locking system, interchangeable wearing parts, and easy maintenance. This series impact crushers provide customers low capital cost solutions, outstanding performance, good cubical shape, lowest operation cost per ton, and wide materials applications.

主要部件 Main Components



特色及优势 Features & Advantages

重型转子设计 Heavy duty rotor design

所有的PFW系列反击破都有一个为达到更高转动惯性、最佳破碎性能的重型转子。这种重型转子重量通常是竞争对手同等型号转子的1.5-2倍。正是这种重型转子设计确保了PFW系列反击破破碎物料时能产生最大的破碎惯性和反冲击力，达到最大的破碎比和最佳的产品粒形。

All pfw series impact crushers have a heavy duty and superior weight rotor, which deliver high inertia required for optimum crushing performance. These heavy duty rotors usually are 1.5-2 times heavier than the rotors of other competitor's comparable size, and ensure maximum inertia and superior impact forces, resulting in optimum reduction while maintaining cubical product shape.

独特的板锤锁紧装置 unique hammer locking device

板锤锁紧楔块同时从横向和纵向紧固住板锤，板锤的安装和更换非常方便快捷。

Hammer locking wedges fix the hammers both vertically and horizontally. It is very easy and quick to fit or remove the hammer. The rear of the hammer locks easily along the whole length of the backing plate and hammer, give solid abutment positioning and maintaining rigidity during operation.

衬板可内部调整更换 interchangeable liners

一般情况下，反击破在使用一段时间后，其不同位置衬板的磨损情况是不一样的。所有PFW系列反击破的衬板都是可以在机器内部进行调整更换的，这样就可以保证易损件最大程度的利用率，进一步降低设备的运行成本。

In a crusher, liners are not worn out at the same rate. All liners in PFW series impact crusher can be can be interchanged to compensate for areas with unequal wearing. This results in maximum utilization of wearing parts and further reduces operating costs.

初级破碎和二级破碎两用 flexible application in primary and secondary crushing

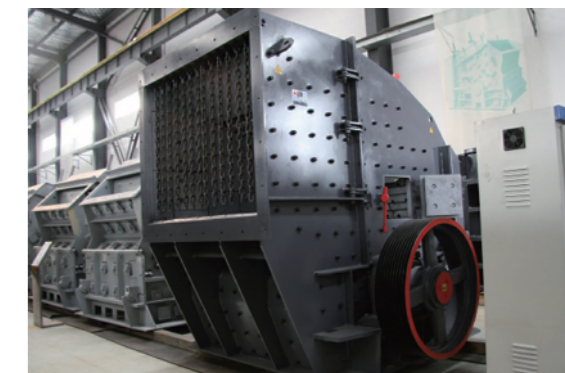
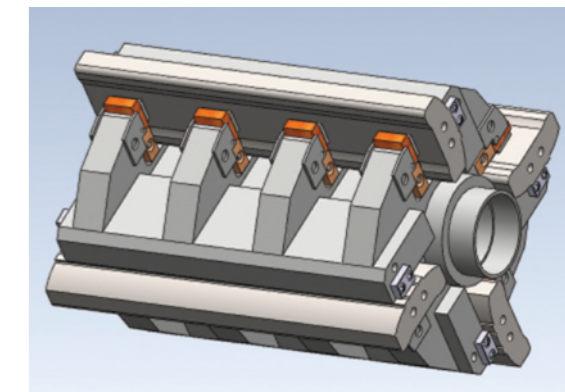
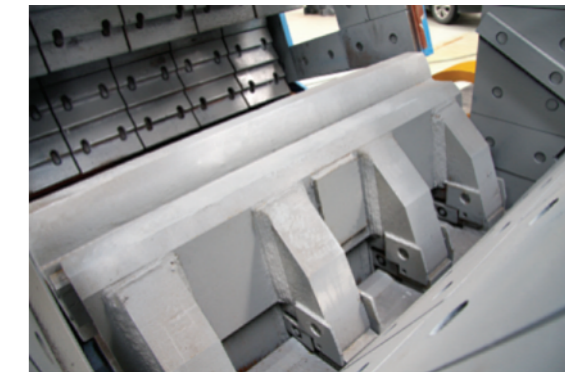
PFW系列反击式破碎机即可作为初级破碎机使用（II型，具有两个反击架），也可作为二级破碎机使用（III型，具有三个反击架）。II型具有比较高的破碎腔，可以接受更大的进料粒度；III型具有第三个可调节的反击架，破碎比更大，产品中细骨料含量更高。

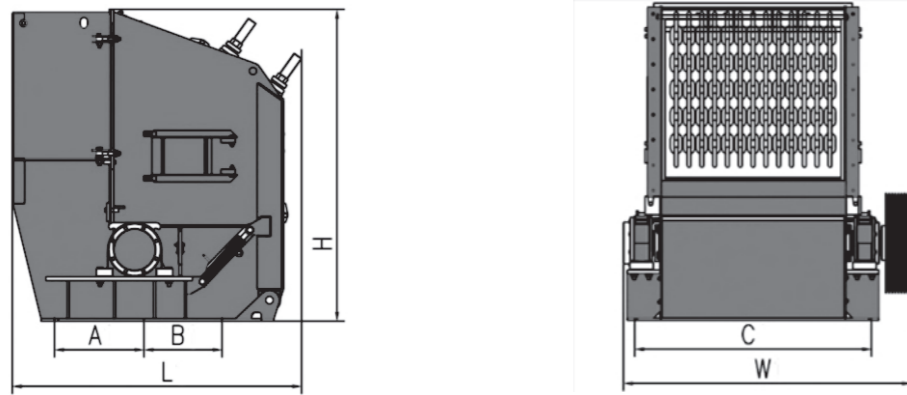
PFW series impact crusher can be used both as primary crusher (type II, with two break curtain) and secondary crusher (type III, with three break curtain). Type II has higher crushing chamber and accept bigger feeding size. Type III has the third adjustable break curtain, gives higher reduction ratio and finer fraction sizes.

操作简单，维护方便 easy operation and simple maintenance

转子和反击架的间距，反击破上盖的启闭都是由液压系统完成。机器自带的吊装装置（可选）可以在更换配件、维修保养时带来巨大的便利。

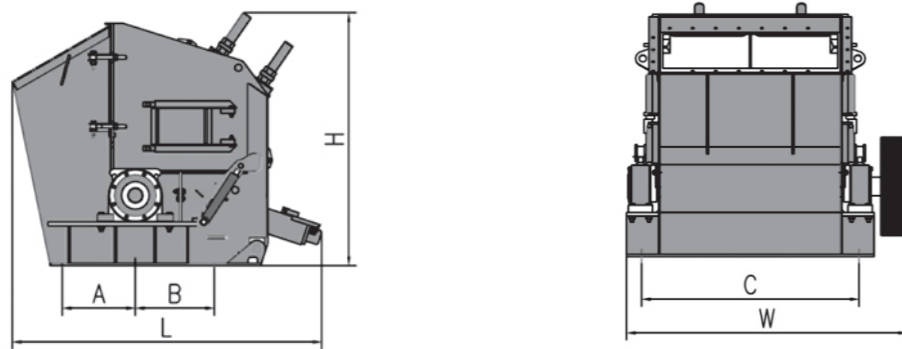
Both the distance between rotor and breaking curtain and the opening or closing the crusher shell are done by hydraulic system. One lifting device(optional) is available for changing spare parts and maintenance.





外形尺寸 Overall dimension II型

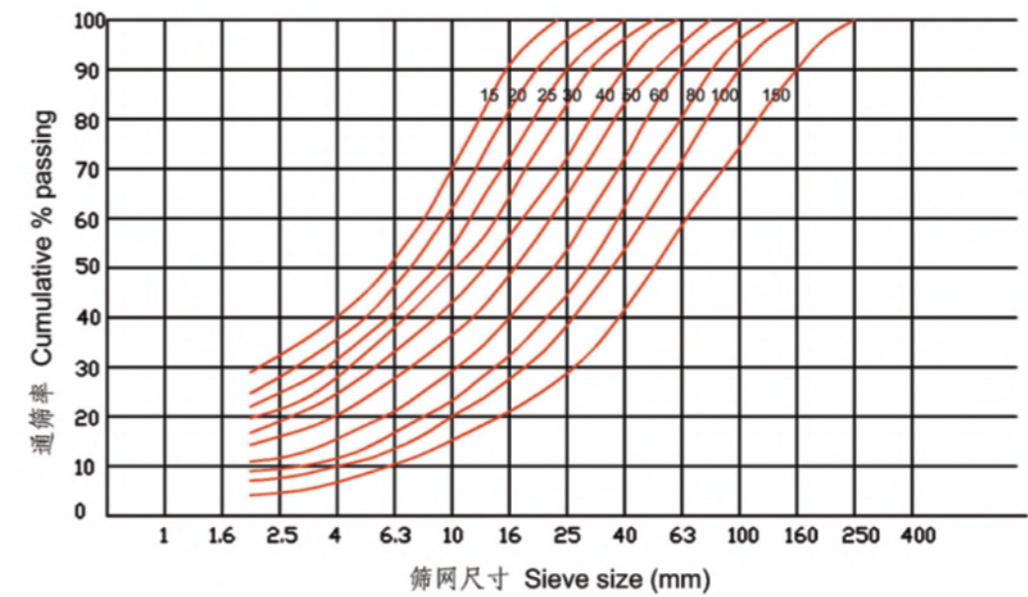
型号 Model	L	W	H	A	B	C
PFW1214-II	2400	2310	2550	600	650	1792
PFW1315-II	2700	2570	2800	550	800	1972
PFW1318-II	2700	2870	2800	550	800	2172
PFW1415-II	2902	2701	3070	830	720	1972



外形尺寸 Overall dimension III型

型号 Model	L	W	H	A	B	C
PFW1214-III	2550	2310	2100	600	650	1792
PFW1315-III	2960	2570	2380	550	800	1972
PFW1318-III	2960	2870	2380	550	800	2172
PFW1415-III	3120	2650	2660	830	720	1972

产品粒度曲线 Production curves



主要技术参数 Main technical data II型

型号 Model	规格 Model	进料口尺寸 (mm)	最大进料粒度 (mm)	生产能力 (t/h)	装机功率 (kw)	外形尺寸 Overall dimension (mm)
PFW1214-II	Φ1150×1400	1100×1430	500	130-200	132-160	2400×2310×2550
PFW1315-II	Φ1300×1500	1200×1530	600	180-320	160-200	2700×2570×2800
PFW1318-II	Φ1300×1800	1200×1830	700	240-400	200-250	2700×2870×2800
PFW1415-II	Φ1400×1500	1450×1530	800	260-450	200-250	3000×2700×3070

主要技术参数 Main technical data III型

型号 Model	规格 Model	进料口尺寸 (mm)	最大进料粒度 (mm)	生产能力 (t/h)	装机功率 (kw)	外形尺寸 Overall dimension (mm)
PFW1214-III	Φ1150×1400	570×1430	250	90-170	132-160	2550×2310×2100
PFW1315-III	Φ1300×1500	625×1530	300	180-270	160-200	2960×2570×2380
PFW1318-III	Φ1300×1800	625×1830	300	220-300	200-250	2960×2870×2380
PFW1415-III	Φ1400×1500	800×1350	350	280-350	200-250	3120×2650×2660

注：上述曲线是基于破碎中等硬度石料，可能会因为不同物料和进料分布而有所变化。
Note: The above curves are based on medium-hard material, and may be changed with different materials and feed distribution.